



## 10/43 Talara Road GYMEA NSW

2 1 1

Located for lifestyle with only minutes' walk to the popular GyMEA Village rests this top floor apartment with modern updates. An ideal opportunity for investors or first home buyers alike.

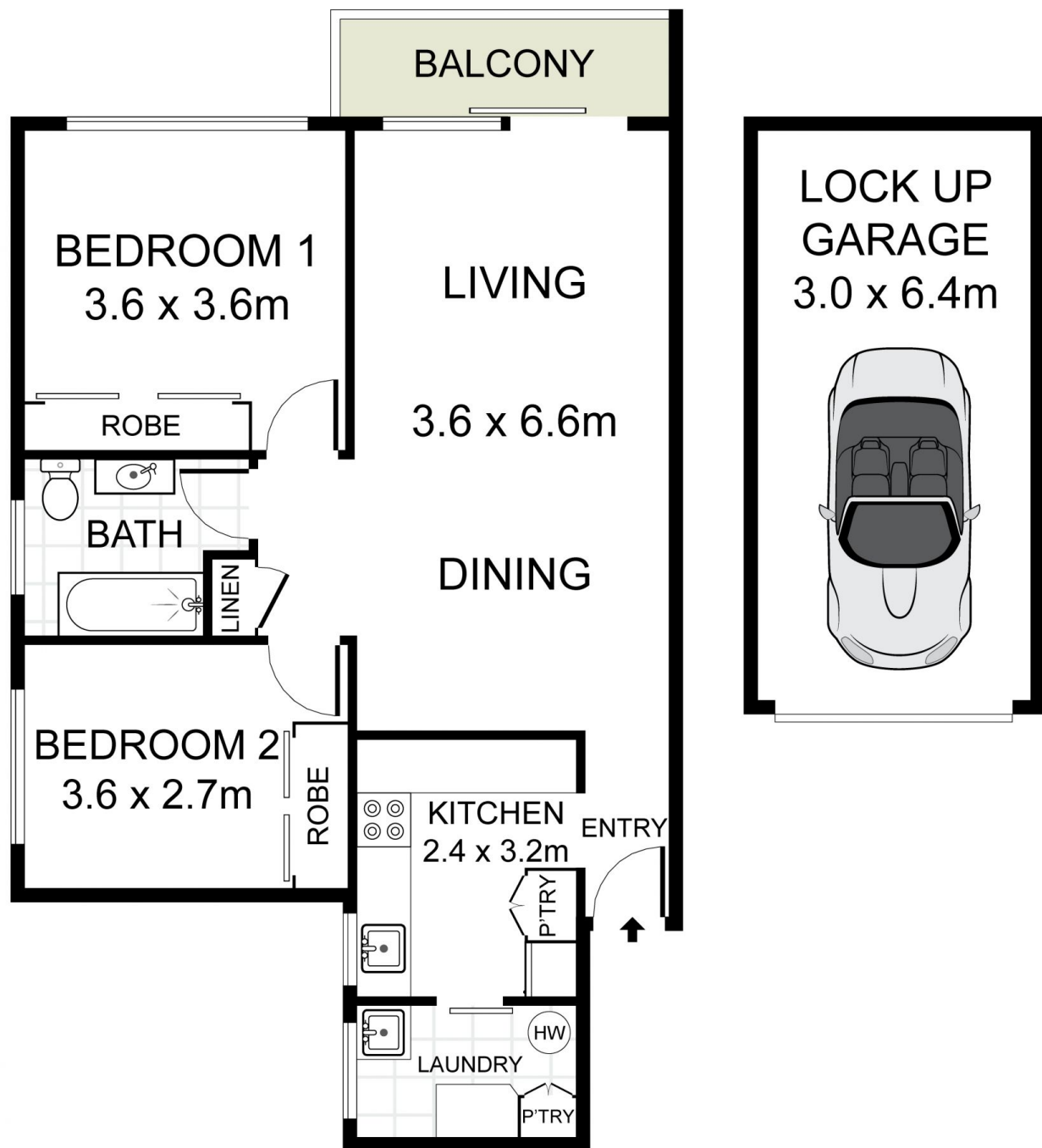
- \* Open plan living and dining area with split system A/C unit
- \* 2 bedrooms, both with BIR, master bedroom with 2nd A/C unit
- \* Renovated bathroom, tiled floor to ceiling with quality fixtures
- \* Kitchen with plenty of bench space and internal laundry
- \* West facing balcony, floating timber flooring, single lock up garage

**Type** : Apartment  
**Building Size** : 11 sqm  
**Land Size** : 101 sqm  
**View** : <https://www.jreproperty.com.au/sale/nsw/sutherland/gyMEA/residential/apartment/7488895>



**Trent Jeffree**  
02 9540 2222

[For full version visit the website](https://www.jreproperty.com.au)



**CENTURY 21.**  
Jeffree Real Estate

10/43 Talara Road, GyMEA

DISCLAIMER: PLANS SHOWN ARE FOR PRESENTATION PURPOSES AND ARE NOT PART OF ANY LEGAL DOCUMENT. ALL MEASUREMENTS AND FIGURES ARE APPROXIMATE.