



4/129-131 Manchester Road GYMEA NSW

3 **2** **2**

With outstanding house like dimensions and modern appeal this exceptional three bedroom townhouse is set well above its peers offering excellent living areas whilst boasting the front position of this small boutique complex of 4. Completed with tranquil outdoor surrounds this home is placed within an easy stroll to GyMEA shops, rail & bus.

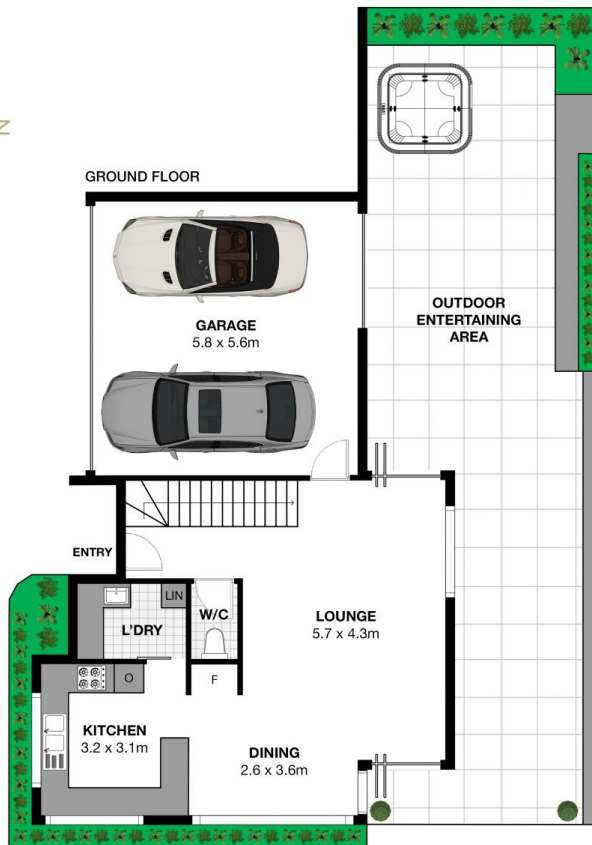
- * Light filled and large separate lounge & dining with floorboards
- * 3 generous bedrooms all with built in wardrobes and ceiling fans
- * Master bedroom with parent retreat, balcony, ensuite with double shower
- * Chic granite kitchen with Miele appliances and built in coffee machine

[For full version visit the website](https://www.jreproperty.com.au)

Type : Townhouse
Building Size : 26 sqm
View : <https://www.jreproperty.com.au/sale/nsw/sutherland/gyMEA/residential/townhouse/7488897>



Luke Jeffree
02 9540 2222



UPPER FLOOR



4/129-131 Manchester Road, Gymea

This is for illustrative purposes only. All dimensions are approximations. These illustrations do not constitute part of any legal documents.

