



**11 Bolaro Avenue GYMEA NSW**

3 1 1

Quietly positioned this family home is offered for the first time in 35 years and presents an ideal opportunity to the buyer who is looking for an original well-maintained home only requiring minor renovations.

Original condition throughout boasting high ceilings and a spacious floorplan consisting of a separate kitchen overlooking the rear yard, living and dining area, two bedrooms with built-ins and oversized third bedroom or large family room.

The rear yard is secure with level lawn, established trees and gardens perfect for children all within walking distance to Gymea North Public School and bustling Gymea Village.

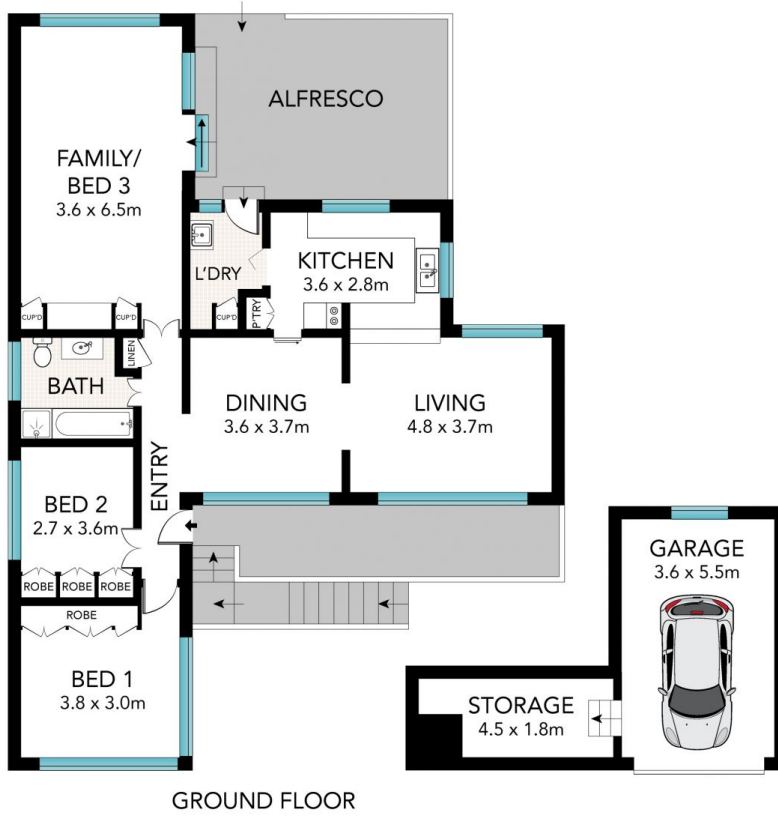
\* Original condition throughout with spacious light filled interiors

**Type** : House  
**Land Size** : 575.4 sqm  
**View** : <https://www.jreproperty.com.au/sale/nsw/sutherland/gymea/residential/house/7488898>



**Luke Jeffree**  
02 9540 2222

[For full version visit the website](https://www.jreproperty.com.au)



GROUND FLOOR



SITE PLAN (NOT TO SCALE)



Scale in metres. Indicative only. Dimensions are approximate. All information contained herein is gathered from sources we believe to be reliable. However, we cannot guarantee its accuracy and interested persons should rely on their own enquiries.

11 Bolaro Avenue, Gymea