



9/4-6 Paddison Avenue GYMEA NSW

3 2 1

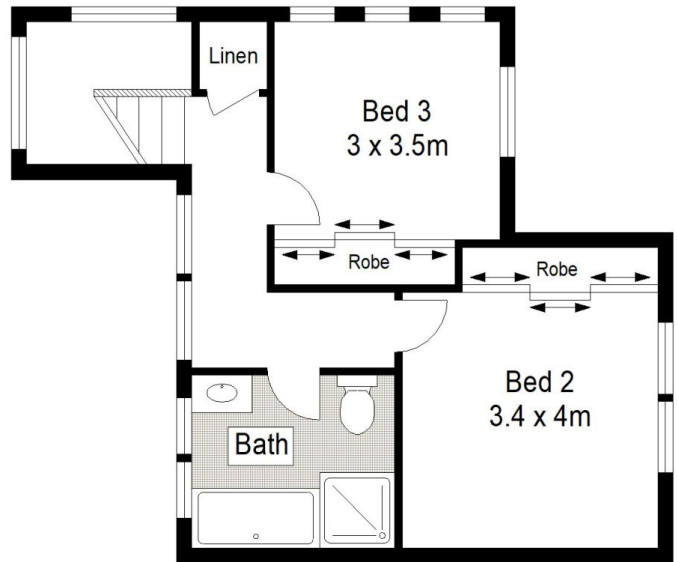
Perfectly designed boasting spacious and light filled interiors throughout this immaculate home showcases an effortless flow to the tranquil alfresco areas that can be enjoyed all year round.

Land Size : 211 sqm
View : <https://www.jreproperty.com.au/sale/nsw/sutherlandland/gymea/residential/townhouse/7488902>

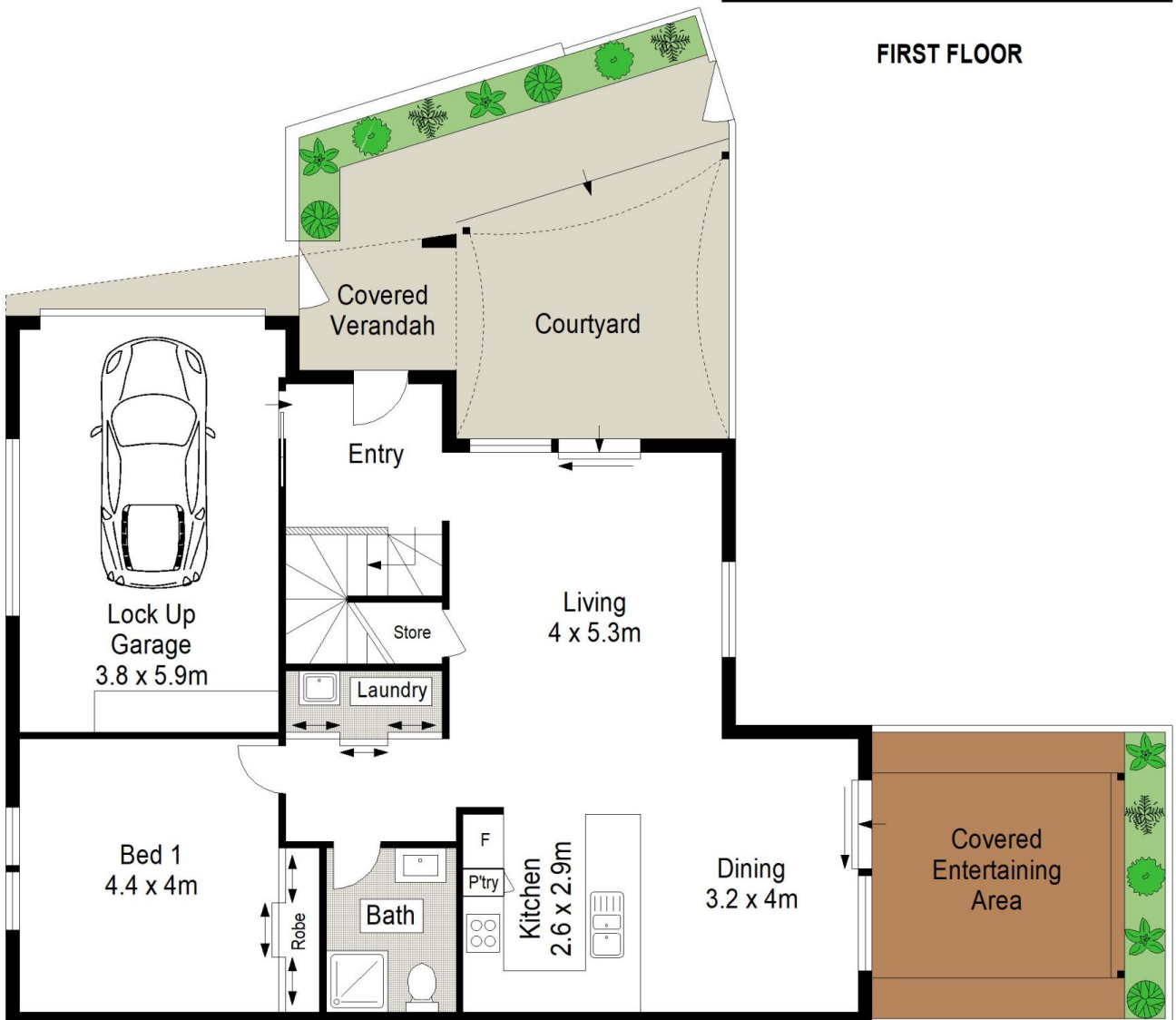
Flawlessly presented with luxurious inclusions there is absolutely nothing to do but move in and relax and enjoy a low maintenance peaceful lifestyle.

Positioned in a boutique complex and in a quiet cul-de-sac in a highly sought-after area close to Gymea shops, cafes and public transport.

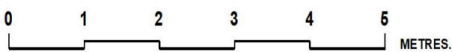
- Light filled open plan living and dining areas flowing effortlessly to outdoor entertaining
- Quality modern stone kitchen with gas cooking and stainless-steel appliances
- Large master bedroom downstairs with additional upstairs



FIRST FLOOR



GROUND FLOOR



Scale in metres. Indicative only. Dimensions are approximate. All information contained herein is gathered from sources we believe to be reliable. However we cannot guarantee its accuracy and interested persons should rely on their own enquiries.



9/4 Paddison Avenue, Gymea

CENTURY 21.
Jeffree Real Estate