



**34/15-23 Premier Street GYMEA NSW**

2 1 1

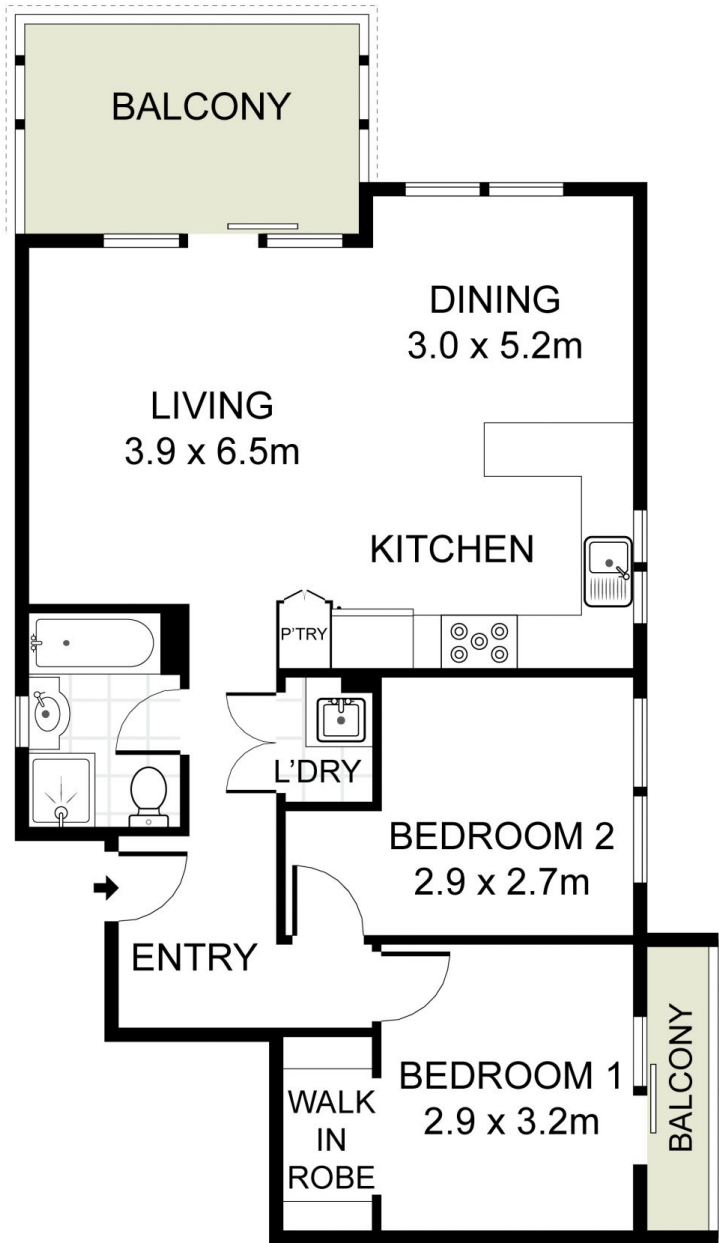
Situated on the second floor with lift access this apartment offers a fantastic opportunity for investors, first home buyers or downsizers.

Perfectly positioned in a well managed, 10 year old security complex surrounded by parklands and only moments to GyMEA shops, cafes and public transport.

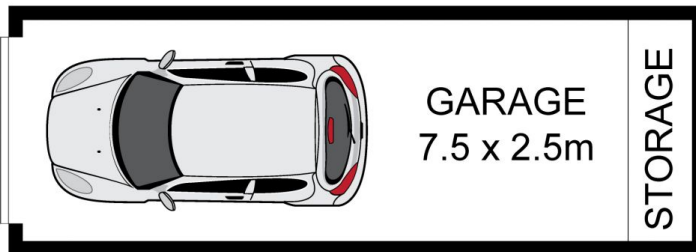
- \* Sun drenched open plan living and dining area off the kitchen
- \* Two bedrooms, main bedroom with walk-in robe and balcony
- \* Bathroom with separate bath and shower- Compact laundry
- \* East facing balcony off the main living area

**Type** : Apartment  
**Price** : \$ 550,000  
**Building Size** : 10 sqm  
**View** : <https://www.jreproperty.com.au/sale/nsw/sutherland/gyMEA/residential/apartment/7488903>

[For full version visit the website](https://www.jreproperty.com.au)



LEVEL TWO



34/15-23 Premier Street, Gymea

DISCLAIMER: PLANS SHOWN ARE FOR PRESENTATION PURPOSES AND ARE NOT PART OF ANY LEGAL DOCUMENT. ALL MEASUREMENTS AND FIGURES ARE APPROXIMATE.