



2/23-25 June Place GYMEA BAY NSW

3 2 1

Showcasing spacious light filled interiors throughout this townhouse offers a low maintenance lifestyle and is nestled within a boutique complex close to schools, shops and parklands.

The floor plan provides spacious living downstairs leading to a large private courtyard and all bedrooms on the second level.

- *Spacious living with reverse cycle air conditioning and gas heating
- *Updated kitchen with stainless steel appliances and plenty of storage
- *Master bedroom with walk-in robe, ensuite, air con and ceiling fan

[For full version visit the website](https://www.jreproperty.com.au/sale/nsw/sutherland/gymea-bay/residential/townhouse/7488907)

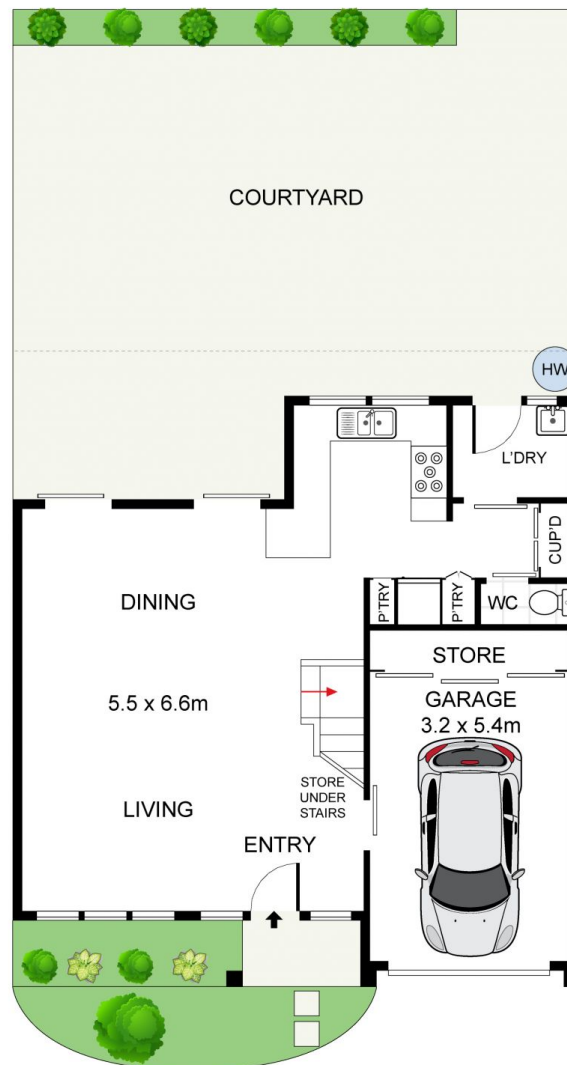
Type : Townhouse
Land Size : 190 sqm
View : <https://www.jreproperty.com.au/sale/nsw/sutherland/gymea-bay/residential/townhouse/7488907>



Luke Jeffree
02 9540 2222



LEVEL ONE



GROUND LEVEL



2/23 June Place, GyMEA Bay

DISCLAIMER: PLANS SHOWN ARE FOR PRESENTATION PURPOSES AND ARE NOT PART OF ANY LEGAL DOCUMENT. ALL MEASUREMENTS AND FIGURES ARE APPROXIMATE.