

12 Molong Road GYMEA BAY NSW

5 3 3

Stunning Bay Views

Elevated above the glistening waters of North West Arm this home has WOW factor from the moment you enter the front door. A substantial multi-level floor plan provides with open plan living wrapped in walls of glass and adjoining decks to capitalise on the superb outlook. Surrounded in a tranquil landscaped setting and residing in a quiet cul-de-sac this property provides a privileged lifestyle in the heart of beautiful Gymea Bay.

- * Bright open plan living and kitchen with water views
- * Sunny, wide alfresco deck with sweeping vistas
- * Master bedroom with custom built cabinetry & ensuite
- * Five bedrooms + study, ducted air conditioning

[For full version visit the website](https://www.jreproperty.com.au)

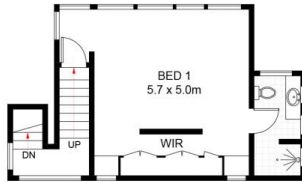
Type : House
Land Size : 664 sqm
View : <https://www.jreproperty.com.au/sale/nsw/sutherland/gymea-bay/residential/house/7488908>



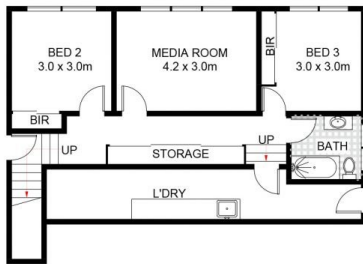
Trent Jeffree
02 9540 2222



(NOT SHOWN IN ACTUAL
LOCATION / ORIENTATION)



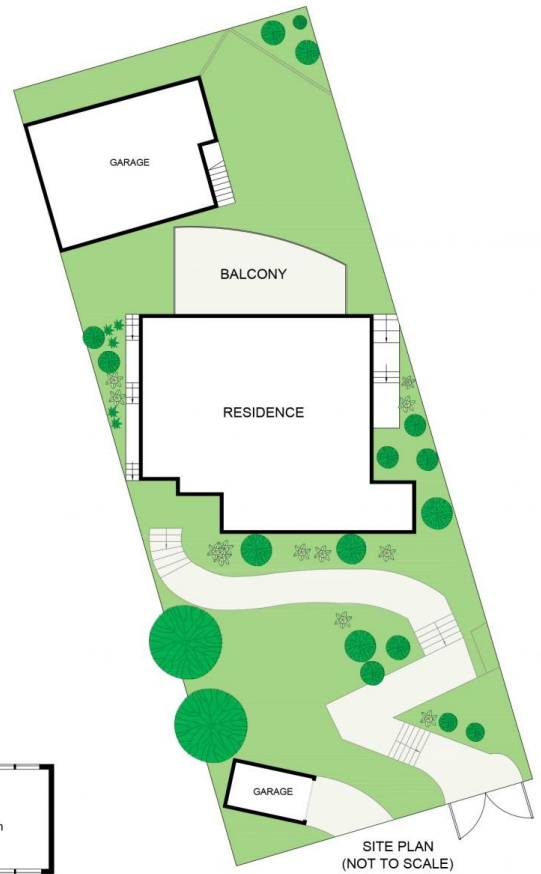
TOP LEVEL



LOWER LEVEL



ENTRY LEVEL



12 Molong Road, Gymea Bay

DISCLAIMER: PLANS SHOWN ARE FOR PRESENTATION PURPOSES AND ARE NOT PART OF ANY LEGAL DOCUMENT. ALL MEASUREMENTS AND FIGURES ARE APPROXIMATE.