



13 Horns Avenue GYMEA BAY NSW

5 2 2

Situated in a highly sought-after location in Gymea Bay, this substantial family home can accommodate a growing family with ease and boasts multiple living areas over two levels of living.

Spacious throughout the downstairs floor plan provides formal and informal areas and a fifth bedroom or home office. All upstairs bedrooms are great in size and include built-in robes while the large master bedroom is complete with ensuite and walk-in robe.

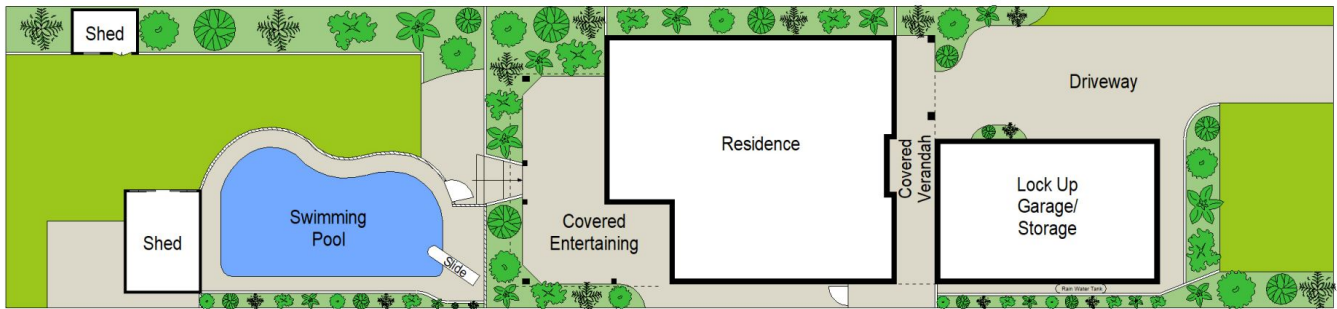
You will enjoy entertaining outdoors while watching the children play with a large covered alfresco area overlooking an inground pool and North facing level lawn with established garden surrounds.

* Spacious formal and informal areas and additional

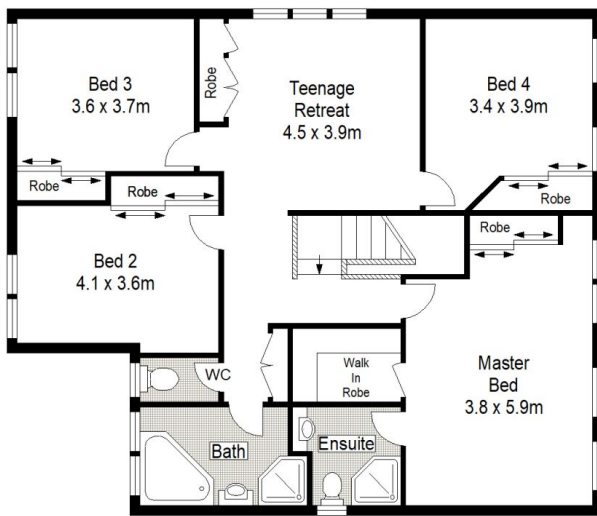
Land Size : 663.9 sqm
View : <https://www.jreproperty.com.au/sale/nsw/sutherland/gymea-bay/residential/house/7488912>



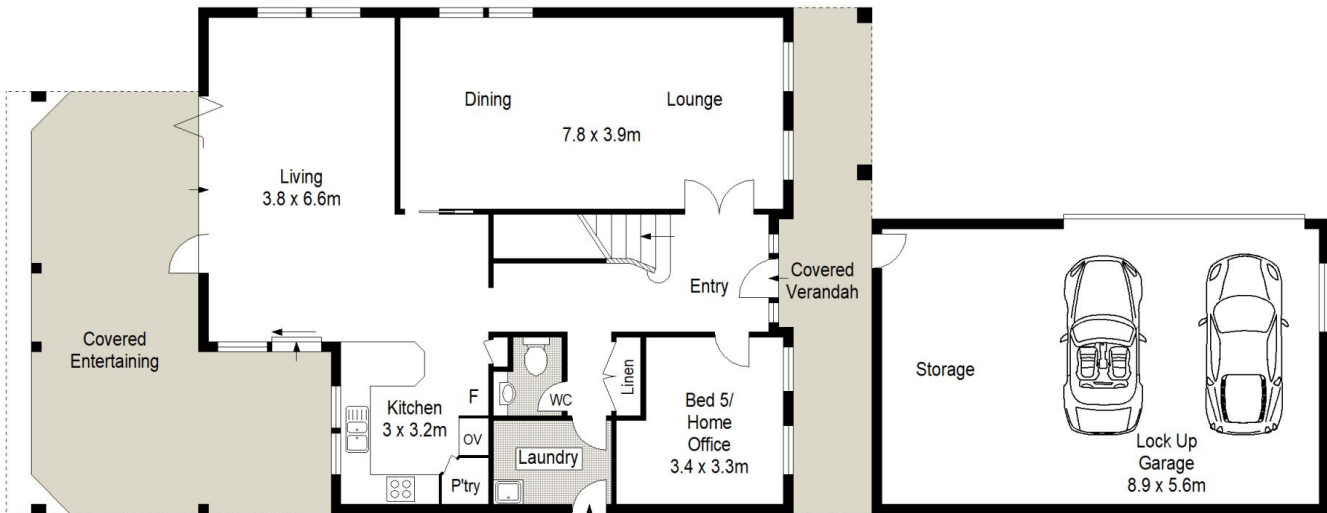
Luke Jeffree
02 9540 2222



SITE PLAN (NOT TO SCALE)



FIRST FLOOR



GROUND FLOOR

0 1 2 3 4 5 METRES.

Scale in metres. Indicative only. Dimensions are approximate. All information contained herein is gathered from sources we believe to be reliable. However we cannot guarantee its accuracy and interested persons should rely on their own enquiries.



13 Horns Avenue, Gympie Bay

CENTURY 21.
Jeffree Real Estate