



205/16 Warburton Street GYMEA NSW

2 🛏 2 🚿 1 🚗

"The Gallery" promotes an effortless living experience with a classic design embodying a hybrid of simplicity and elegance.

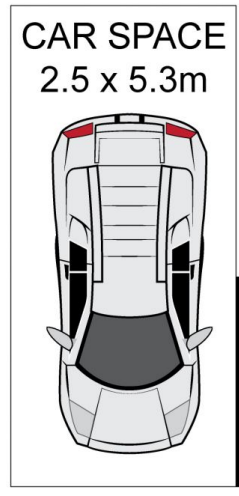
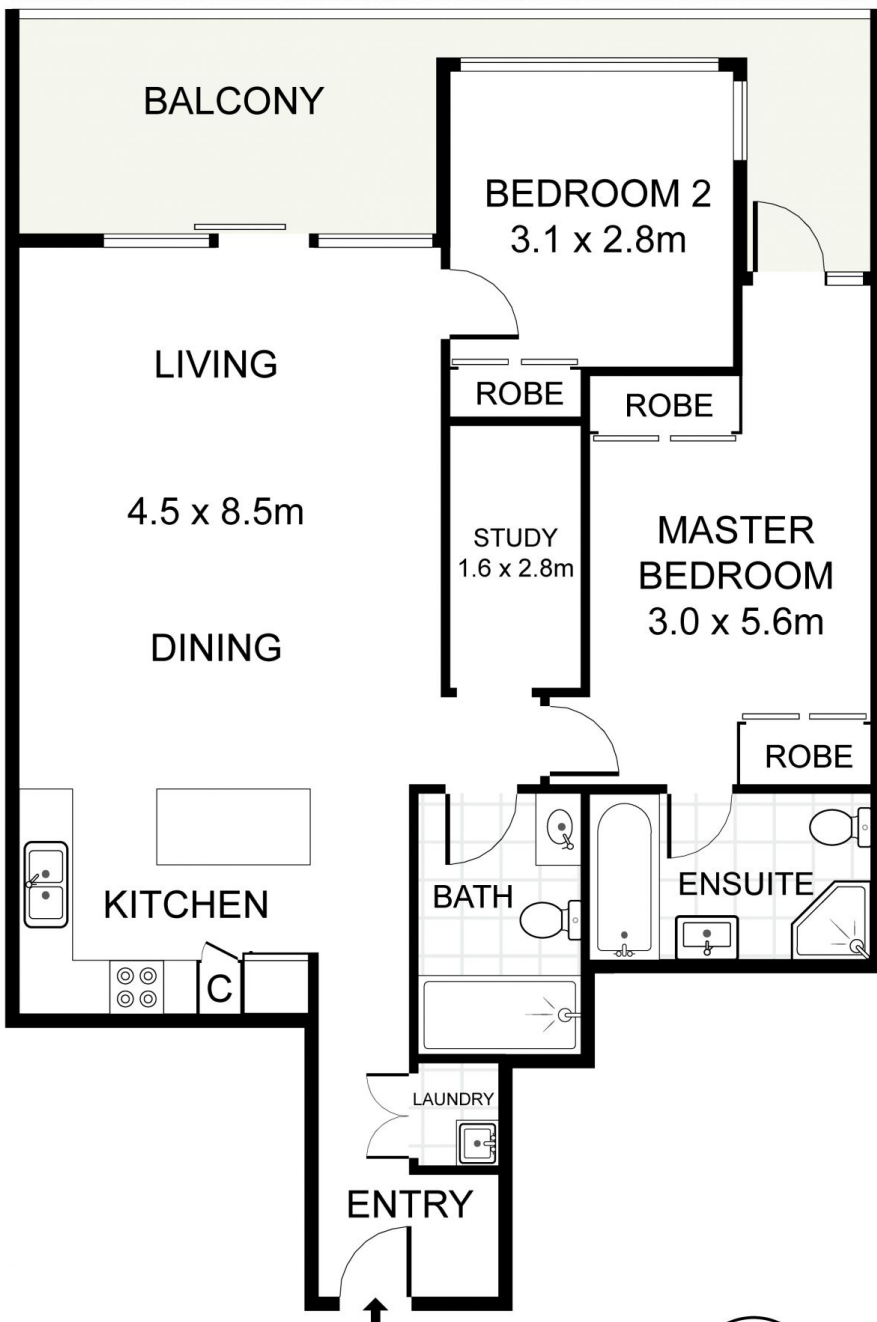
Spacious modern light filled interiors throughout this North facing apartment is situated on the second level with the ease of lift access and is sure to tick all the boxes.

Within walking distance to everything the popular Gymea village has to offer and Hazelhurst gallery just a short level stroll from the front door.

- Open plan living and dining area leading to a sunny north facing balcony
- Modern Caesar stone kitchen with gas cooking and SMEG appliances
- 2 Spacious light filled bedrooms with built-ins and master

Type : Apartment
Building Size : 11 sqm
Land Size : 120 sqm
View : <https://www.jreproperty.com.au/sale/nsw/sutherland/gymea/residential/apartment/7488917>

[For full version visit the website](https://www.jreproperty.com.au)



205/16 Warburton Street, Gymea

DISCLAIMER: PLANS SHOWN ARE FOR PRESENTATION PURPOSES AND ARE NOT PART OF ANY LEGAL DOCUMENT. ALL MEASUREMENTS AND FIGURES ARE APPROXIMATE.