



266 Gympie Bay Road GYMPIE BAY NSW

3 2 2

Superbly reinvented and offering immense appeal with an easy living single level floorplan, this stylish yet practical floorplan is deceptive in space. Immaculately presented with fresh & bright interiors and is complimented by inviting outdoor spaces and a separate outdoor teenage retreat or an ideal 4th bedroom or home office.

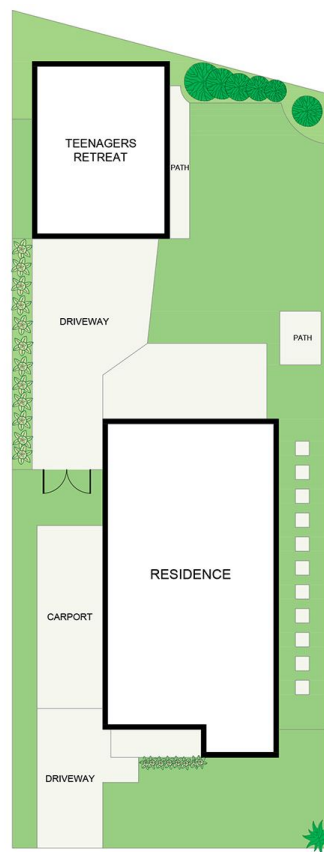
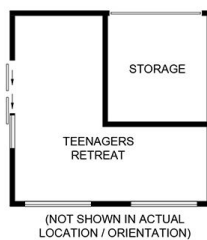
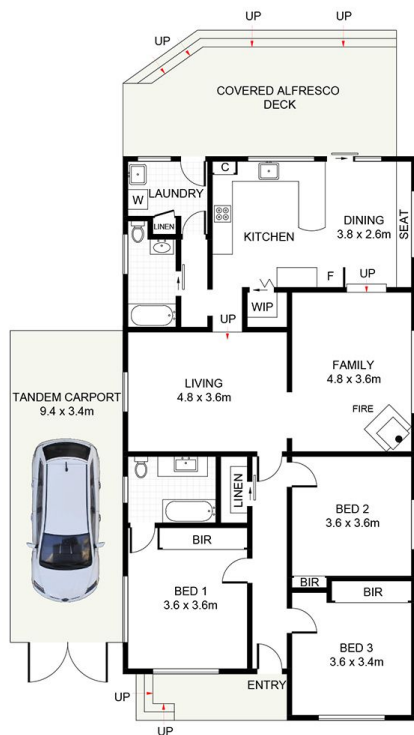
- * Multiple living zones with A/C & slow combustion fireplace
- * Three generous bedrooms, all with built in wardrobes
- * Light filled master bedroom with ensuite complete with underfloor heating
- * Spacious kitchen with built in cabinetry seating
- * Large timber alfresco deck with level grassed lawn
- * Detached teenagers retreat or home office with secure storage area

[For full version visit the website](https://www.jreproperty.com.au)

Type : House
Land Size : 562.8 sqm
View : <https://www.jreproperty.com.au/sale/nsw/sutherland/gympie-bay/residential/house/7488918>



Luke Jeffree
02 9540 2222



SITE PLAN
(NOT TO SCALE)



266 GyMEA Bay Road, GyMEA Bay

DISCLAIMER: PLANS SHOWN ARE FOR PRESENTATION PURPOSES AND ARE NOT PART OF ANY LEGAL DOCUMENT. ALL MEASUREMENTS AND FIGURES ARE APPROXIMATE.