



**3/69-73 Manchester Road GYMEA NSW**

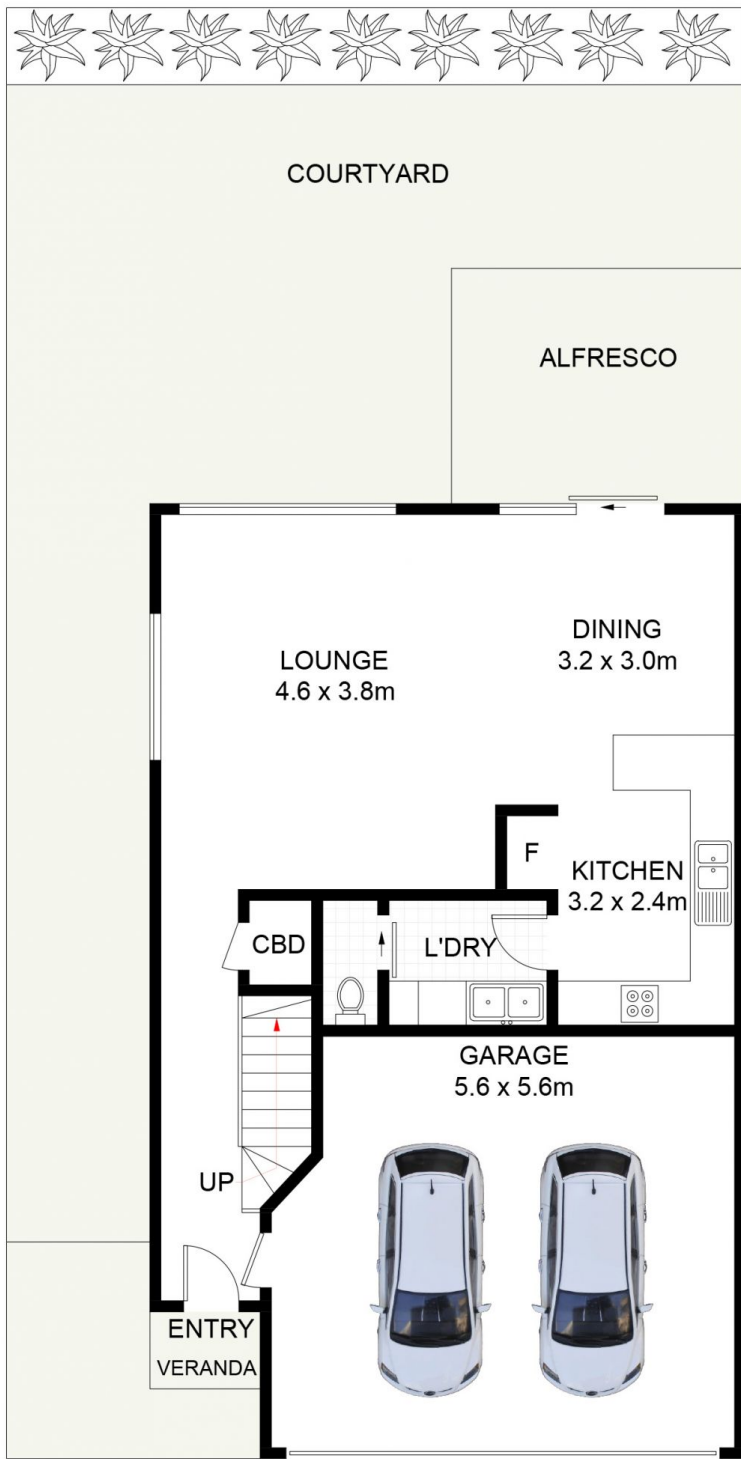
**3** **2** **2**

Set at the back of this well-maintained strata complex resides this immaculate townhouse which is infused with natural light and space. A generous floorplan with a substantial north facing entertainers courtyard capturing the essence of relaxed easy care living while being centrally placed a stroll to the local village shops, caf?'s & transport.

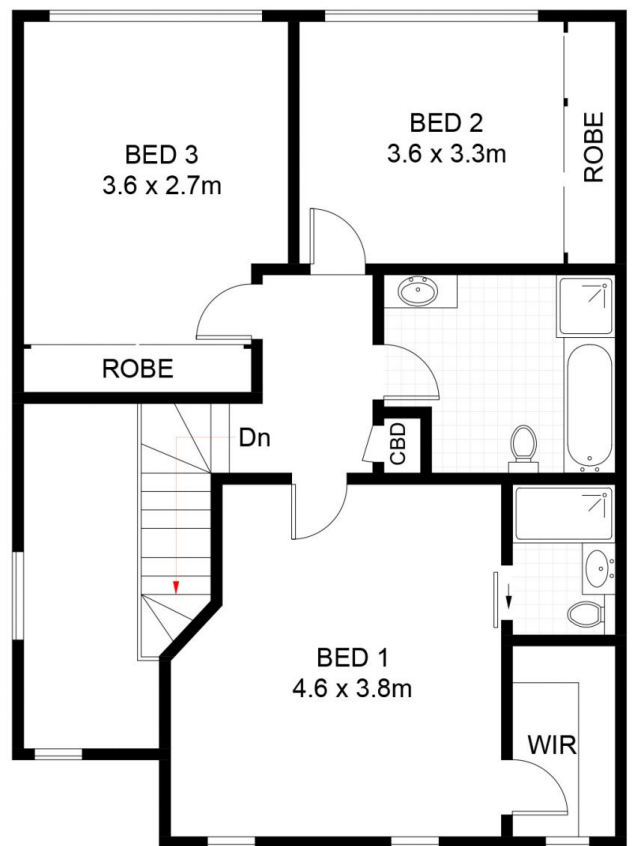
- \* Spacious open plan living with combined lounge & dining with split A/C
- \* Private easy care paved north facing courtyard with undercover area
- \* Updated & stylish stone kitchen with gas cooktop & quality appliances
- \* Three generous bedrooms all with ceiling fans and wardrobes

**Type** : Townhouse  
**Building Size** : 24 sqm  
**View** : <https://www.jreproperty.com.au/sale/nsw/sutherland/gymea/residential/townhouse/7488922>

[For full version visit the website](https://www.jreproperty.com.au)



GROUND FLOOR



FIRST FLOOR



3/69-73 Manchester Road, Gympie

DISCLAIMER: PLANS SHOWN ARE FOR PRESENTATION PURPOSES AND ARE NOT PART OF ANY LEGAL DOCUMENT. ALL MEASUREMENTS AND FIGURES ARE APPROXIMATE.