



**135 Forest Road GYMEA NSW**

4 2 2

Designed for contemporary living this beautiful four-bedroom home showcases quality finishes over a spacious level layout which provides superb seamless indoor/outdoor flow. The focal point of this home is the large kitchen which flows through to the living and dining area which transitions out to a covered alfresco area overlooking the manicured gardens and large outdoor spa which makes entertaining effortless

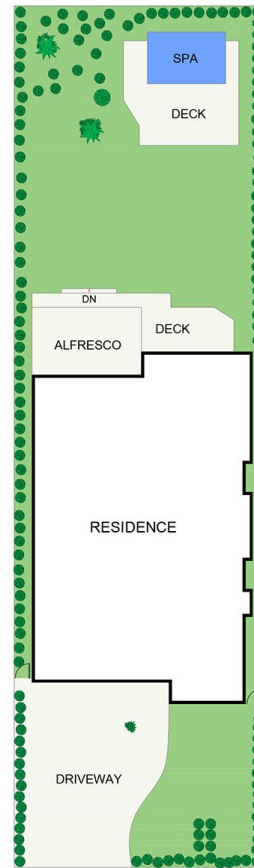
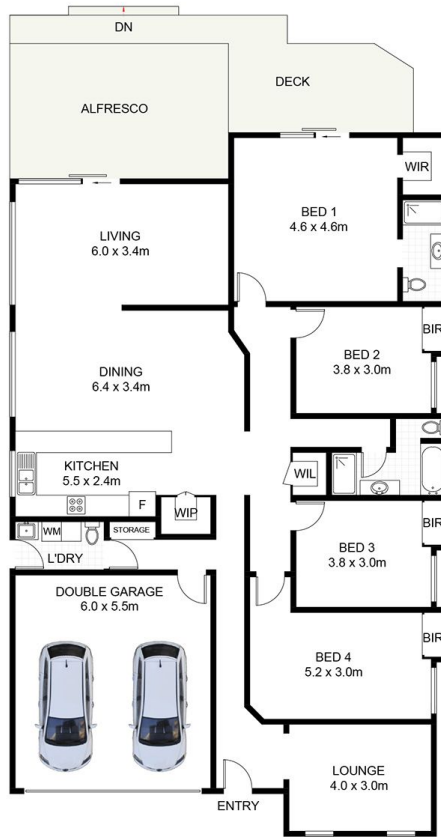
- \* Four large bedrooms with BIR's, main ensuite and WIR
- \* Gourmet galley style kitchen, huge island bench & gas cooking
- \* Modern open plan living areas with tiled flooring plus additional living area
- \* North facing yard with plenty of privacy & swim spa with

**Type** : House  
**Land Size** : 663.9 sqm  
**View** : <https://www.jreproperty.com.au/sale/nsw/sutherland/gyMEA/residential/house/7488928>



**Luke Jeffree**  
02 9540 2222

[For full version visit the website](https://www.jreproperty.com.au)



SITE PLAN  
(NOT TO SCALE)



## Forest Road, GyMEA

DISCLAIMER: PLANS SHOWN ARE FOR PRESENTATION PURPOSES AND ARE NOT PART OF ANY LEGAL DOCUMENT. ALL MEASUREMENTS AND FIGURES ARE APPROXIMATE.