



70 Coonong Road GYMEA BAY NSW

4 2 7

Showcasing a substantial family residence which is presented with style and class providing expansive living spaces, set on a massive 853 sqm (approx.) level block peacefully placed in an exclusive bayside community. A dream opportunity for tradesman, home handyman or those dreaming of extra space with the detached 6 car garaging with plumbing at the rear of the block.

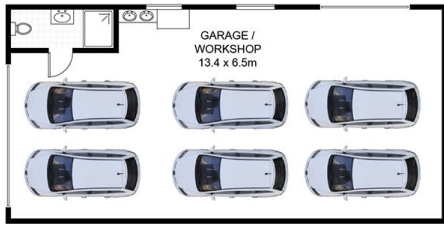
- * Multiple spacious living areas, upstairs and downstairs & home office or 5th bedroom
- * Timeless kitchen with Miele appliances, gas cooking & stone island benchtops
- * 4 beds all with built in wardrobes, Master bedroom with ensuite and walk in wardrobe
- * Ducted air / ducted vacuuming/ underfloor bathroom

[For full version visit the website](https://www.jreproperty.com.au)

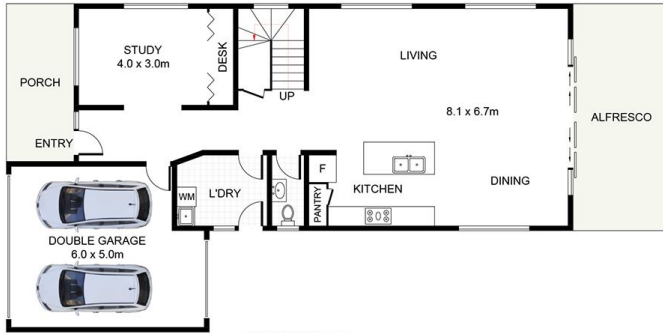
Type : House
Land Size : 853.6 sqm
View : <https://www.jreproperty.com.au/sale/nsw/sutherland/gymea-bay/residential/house/7488929>



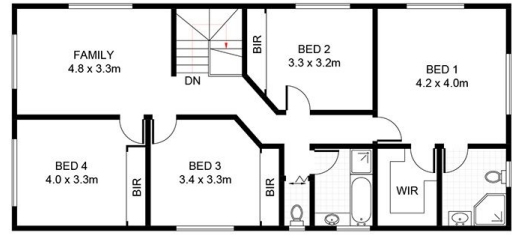
Luke Jeffree
02 9540 2222



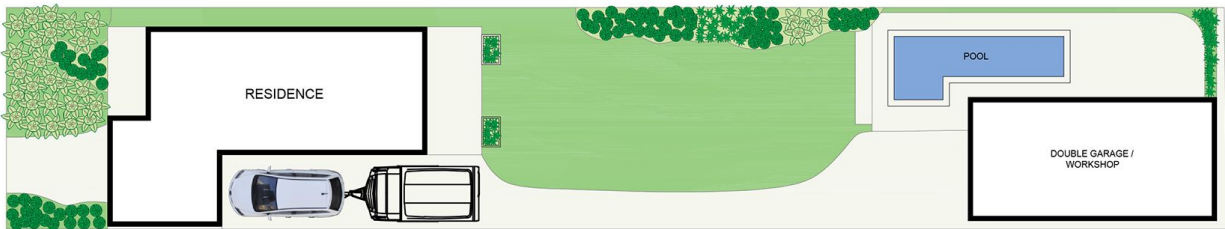
(NOT SHOWN IN ACTUAL LOCATION / ORIENTATION)



GROUND FLOOR



FIRST FLOOR



SITE PLAN
(NOT TO SCALE)

