



8 Withybrook Place SYLVANIA NSW

3 1 1

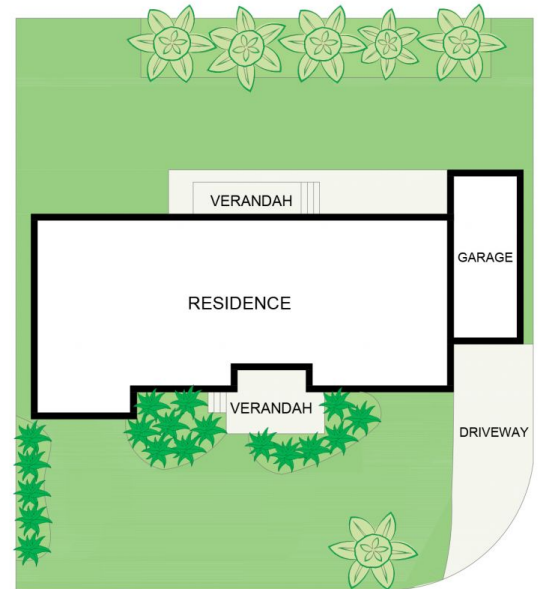
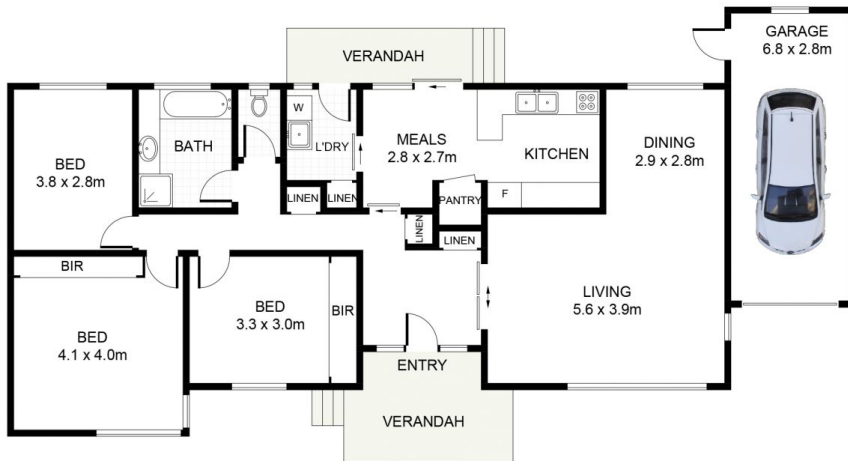
This original three bedroom cottage home is set in a quiet cul-de-sac location in Sylvania. The property promotes an abundance of future potential to the astute renovator or someone who is looking to establish their dream home in a desired real estate locale by starting again.

- * Original condition home, three bedrooms
- * Sunny 556.4m2 block, corner position
- * Renovate / Knockdown Rebuild
- * Position & potential & affordable home
- * Perfect for first home buyer or investor
- * 13.379m frontage x 20.06m
- * Only minutes to the conveniences of shops and facilities

Type : House
Land Size : 556.4 sqm
View : <https://www.jreproperty.com.au/sale/nsw/sutherland/sylvania/residential/house/7488930>



Luke Jeffree
02 9540 2222



SITE PLAN
(NOT TO SCALE)



Withybrook Place, Sylvania

DISCLAIMER: PLANS SHOWN ARE FOR PRESENTATION PURPOSES AND ARE NOT PART OF ANY LEGAL DOCUMENT. ALL MEASUREMENTS AND FIGURES ARE APPROXIMATE.