



**2/8-12 Koorabel Avenue GYMEA NSW**

2 1 1

Relax and enjoy this spacious villa style ground floor apartment which perfectly captures the afternoon sun from its west aspect. Its spacious living areas are complimented by its alfresco courtyard and benefits from new carpet and fresh paint. Residing in a sought-after locale with an easy stroll to Gymea village's boutique shops, eateries, bus and rail.

- \* Easy level access, security building
- \* Substantial living & dining, neat kitchen
- \* Two very generous sized bedrooms both with BIR's
- \* Oversized single lock up garage with internal access
- \* Split system A/C in living, neat bathroom
- \* Exceptional starter/investor or perfect for downsizer buyer in prime locale

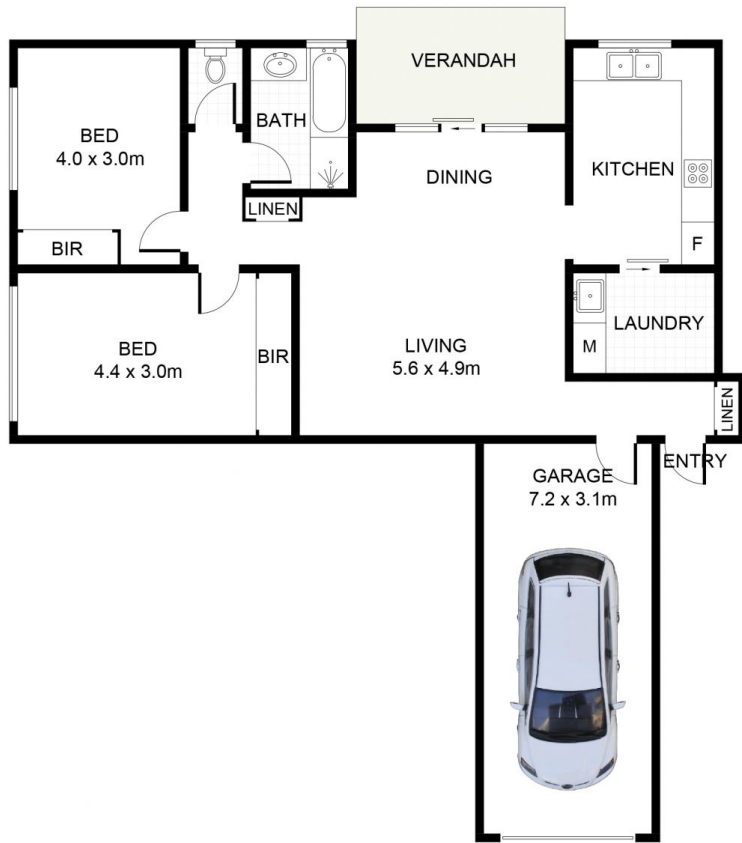
**Type** : Apartment

**View** : <https://www.jreproperty.com.au/sale/nsw/sutherland/gymea/residential/apartment/7488935>



**Trent Jeffree**  
**02 9540 2222**

[For full version visit the website](https://www.jreproperty.com.au)



## Koorabel Avenue, Gymea

DISCLAIMER: PLANS SHOWN ARE FOR PRESENTATION PURPOSES AND ARE NOT PART OF ANY LEGAL DOCUMENT. ALL MEASUREMENTS AND FIGURES ARE APPROXIMATE.