



47 Ellesmere Road GYMEA BAY NSW

4 2 2

Elevated proudly on the high side of the street resides this luxurious home immersed with pure indulgence completed with resort style ambience and surrounded by manicured lush gardens providing an oasis of relaxation. A flawless demonstration of contemporary living in a tranquil family friendly location.

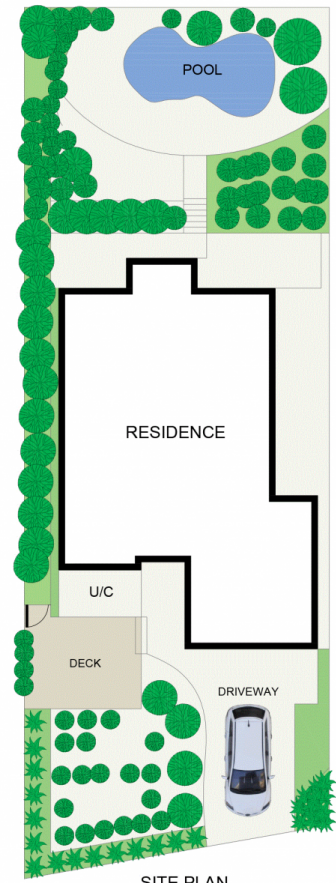
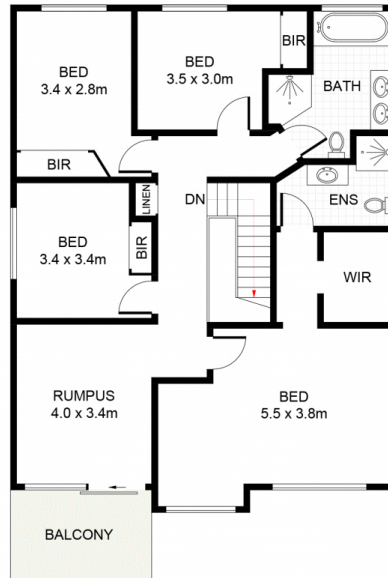
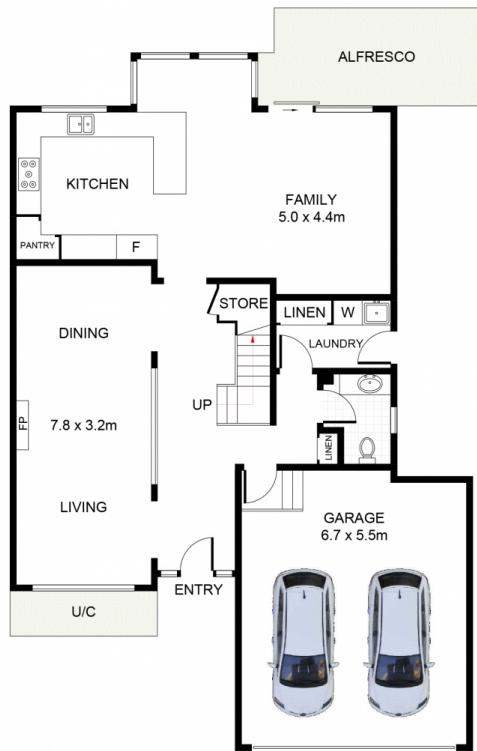
- * 4 king sized bedrooms all with large built in wardrobes
- * Master bedroom with ensuite, walk in wardrobe + parents retreat
- * State of the art kitchen with expansive stone & double SMEG gourmet oven
- * Multiple living and entertaining zones providing family space
- * Newly updated designer bathrooms including downstairs

[For full version visit the website](https://www.jreproperty.com.au)

Type : House
Land Size : 524.8 sqm
View : <https://www.jreproperty.com.au/sale/nsw/sutherland/gymea-bay/residential/house/7488936>



Luke Jeffree
02 9540 2222



Ellesmere Road, Gymea Bay

DISCLAIMER: PLANS SHOWN ARE FOR PRESENTATION PURPOSES AND ARE NOT PART OF ANY LEGAL DOCUMENT. ALL MEASUREMENTS AND FIGURES ARE APPROXIMATE.