



5/22-28 Premier Street GYMEA NSW

4 🛏 2 🚿 2 🚗

This quality residence provides exceptional accommodation with appeal to young families, executive downsizers or the savvy investor. This elegant and immaculate townhouse provides an easy-care lifestyle of comfort and convenience. Possessing excellent easy care indoor and a spectacular courtyard with retractable awning, it sits in a sought-after street a stroll to the village, rail, bus and school.

- * Spacious living areas, polished timber flooring with split system A/C
- * Quality stone kitchen, gas cooking, SMEG appliances & soft close doors
- * 4th bedroom, converted from living to extra bedroom, can be reverted

Type : Townhouse

View : <https://www.jreproperty.com.au/sale/nsw/sutherland/gymea/residential/townhouse/7488943>

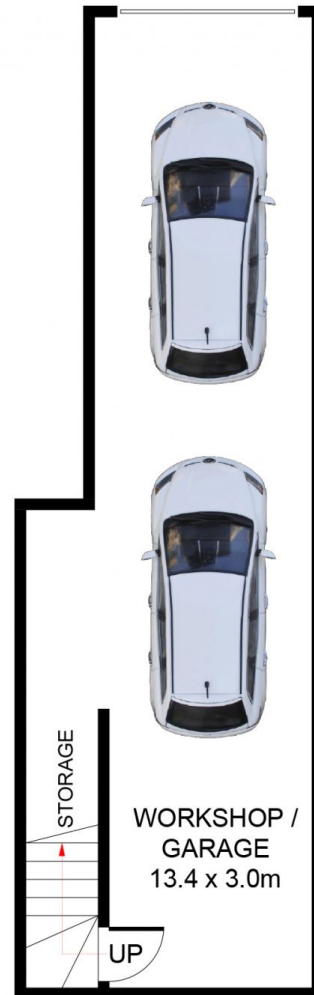


Luke Jeffree
02 9540 2222

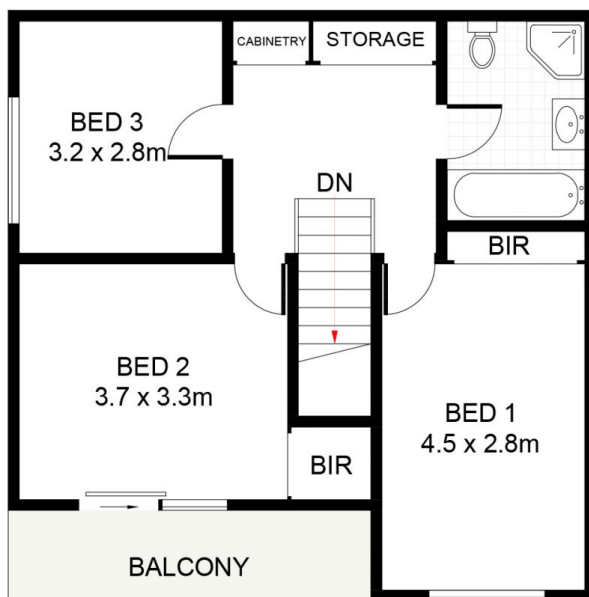
[For full version visit the website](https://www.jreproperty.com.au)



ENTRY LEVEL



LOWER LEVEL



UPPER LEVEL



Premier Street, Gymea

DISCLAIMER: PLANS SHOWN ARE FOR PRESENTATION PURPOSES AND ARE NOT PART OF ANY LEGAL DOCUMENT. ALL MEASUREMENTS AND FIGURES ARE APPROXIMATE.