



3/21 Hotham Road GYMEA NSW

3 2 2

Immaculate and with modern appeal this three-bedroom townhouse offers a low maintenance lifestyle within an easy stroll to Gymea shops and public transport.

The ground floor provides spacious light filled interiors with combined living and stone kitchen with a large Caesar island bench making for perfect entertaining.

Outdoors boasts a sunny private and secure courtyard with lush level lawn and established trees and garden surrounds.

- * Light filled interiors over two levels of modern living
- * Stone kitchen with island bench and chic appliances
- * Master bedroom with ensuite and all bedrooms complete

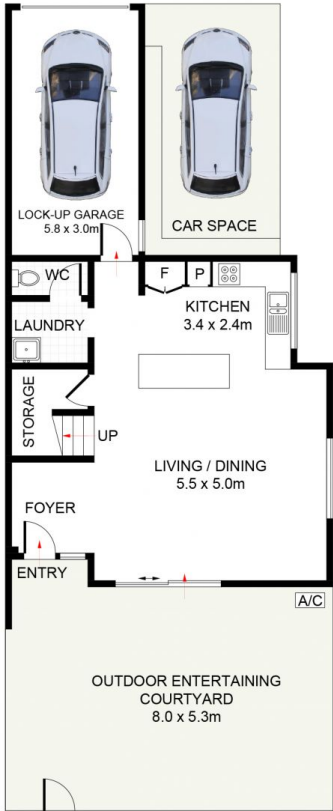
Type : Townhouse

View : <https://www.jreproperty.com.au/sale/nsw/sutherland/gymea/residential/townhouse/7488946>

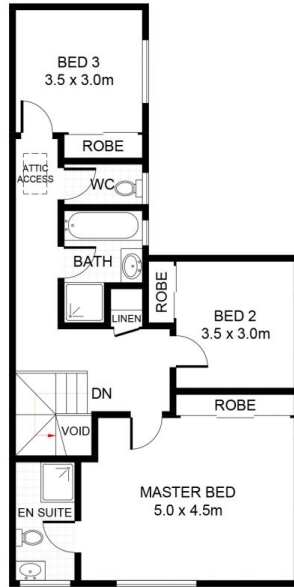


Luke Jeffree
02 9540 2222

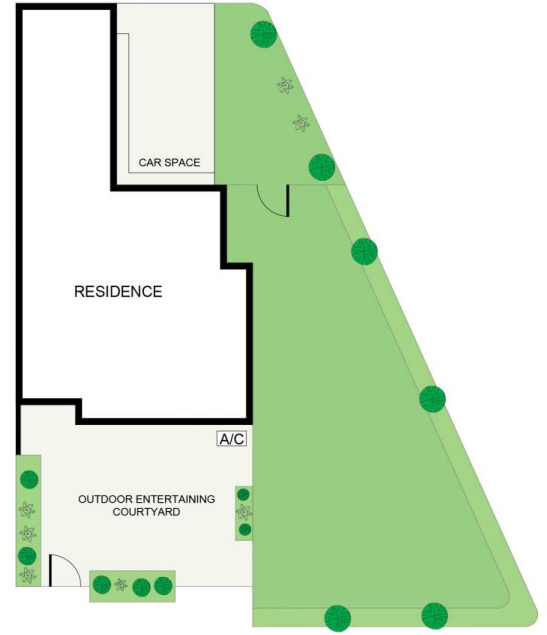
[For full version visit the website](#)



GROUND FLOOR



FIRST FLOOR



SITE PLAN (NOT TO SCALE)



Hotham Road, Gymea

DISCLAIMER: PLANS SHOWN ARE FOR PRESENTATION PURPOSES AND ARE NOT PART OF ANY LEGAL DOCUMENT. ALL MEASUREMENTS AND FIGURES ARE APPROXIMATE.