



12/78 Hotham Road GYMEA NSW

3 **2** **2**

An enticing demonstration in a peaceful garden complex, this impressive townhouse enjoys new and fresh interiors with free flowing and spacious comforts delivering a cosmopolitan lifestyle. Full of natural light and enhanced by a spacious and private north facing courtyard.

- * Spacious family and casual dining area/ 2nd living area upstairs
- * Modern renovated kitchen with plenty of cupboard space
- * North facing courtyard with remote retractable awning
- * Ducted air conditioning, freshly painted and new carpet
- * Generous master bedroom with ensuite and built in wardrobes
- * 2nd & 3rd bedroom are both spacious with built in wardrobes

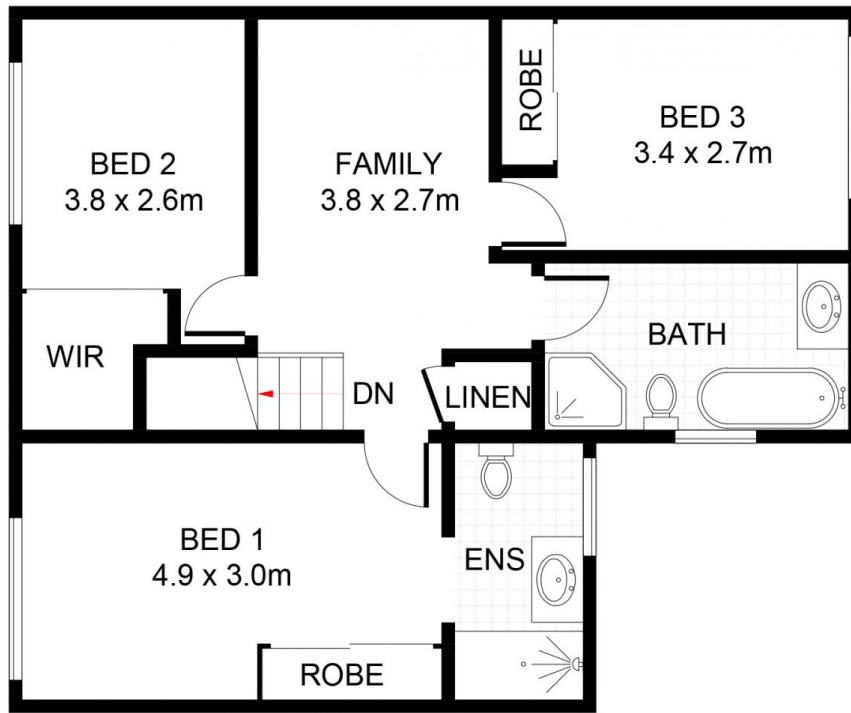
Type : Townhouse

View : <https://www.jreproperty.com.au/sale/nsw/sutherland/gymea/residential/townhouse/7488949>

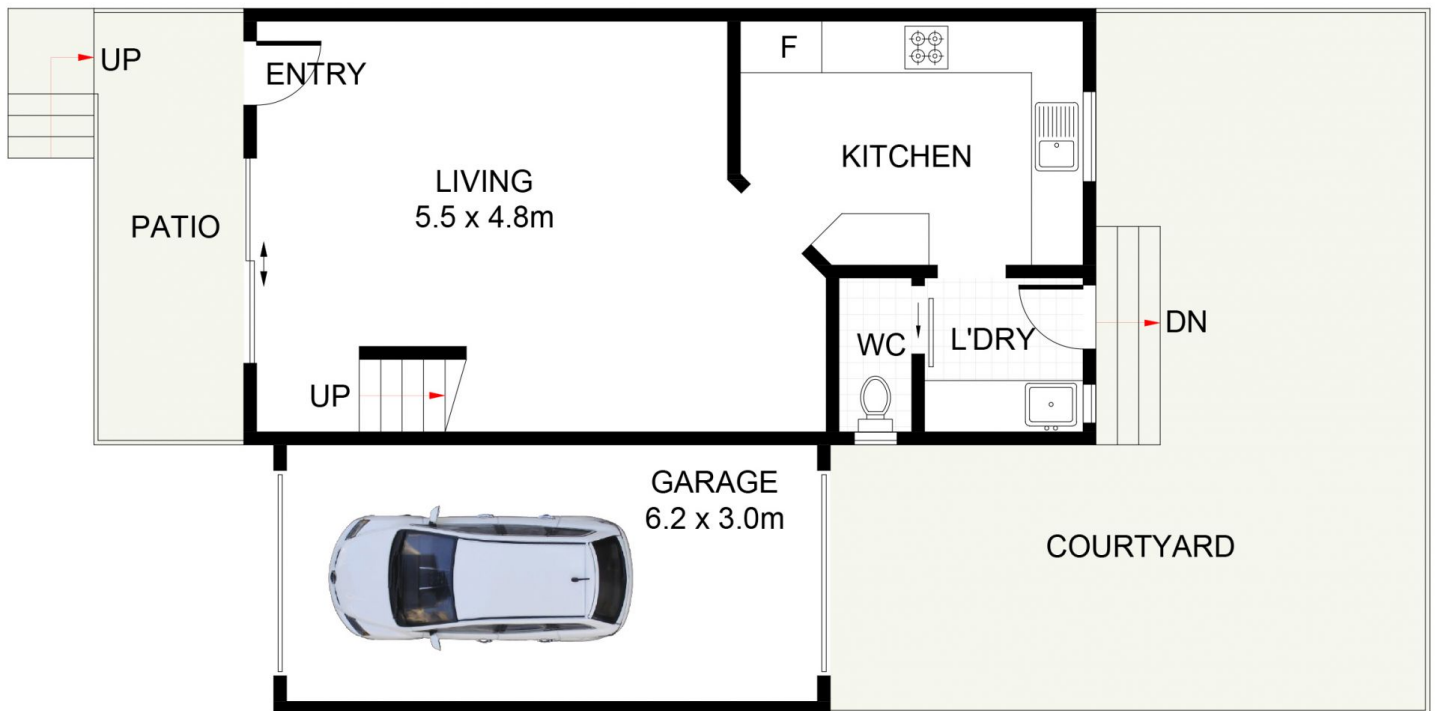


Trent Jeffree
02 9540 2222

[For full version visit the website](https://www.jreproperty.com.au)



FIRST FLOOR



GROUND FLOOR



Hotham Road, Gymea

DISCLAIMER: PLANS SHOWN ARE FOR PRESENTATION PURPOSES AND ARE NOT PART OF ANY LEGAL DOCUMENT. ALL MEASUREMENTS AND FIGURES ARE APPROXIMATE.