



7 Pollard Place KIRRAWEE NSW

3 1 2

Nestled in a cul-de-sac position this attractive renovated residence is presented with style and provides the perfect abode for young families wishing to enjoy fabulous entertaining areas. The expansive open plan indoor living areas opens with stack back doors to an enormous outdoor timber alfresco, perfect for year round entertaining and complimented by a secure child friendly yard.

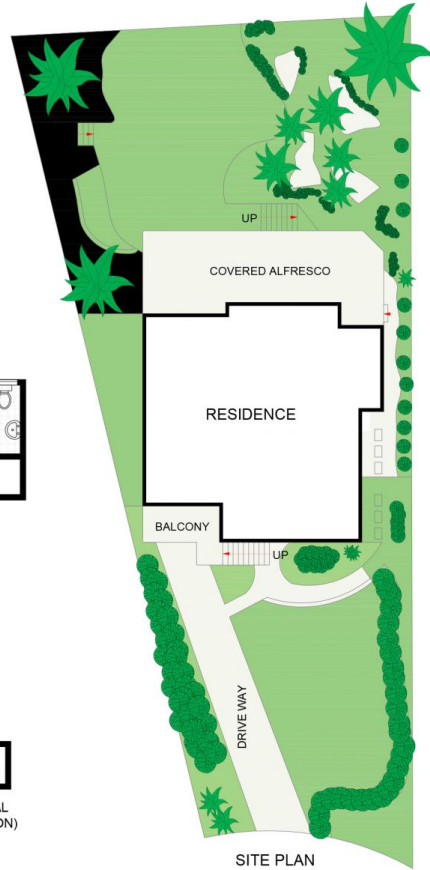
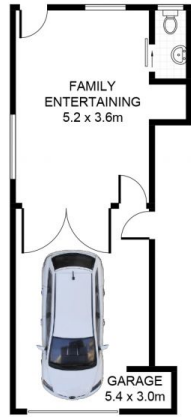
Type : House
Land Size : 708.9 sqm
View : <https://www.jreproperty.com.au/sale/nsw/sutherlandland/kirrawee/residential/house/7488953>

- * Spacious living and dining with timber flooring and split system A/C
- * New kitchen, Caesarstone island bench & plenty of cupboards & d/washer
- * 3 bedrooms all with built in wardrobes, plantation shutters & fans
- * New bathroom with timeless appeal & quality finishes with



Luke Jeffree
02 9540 2222

[For full version visit the website](https://www.jreproperty.com.au)



7 Pollard Place, Kirrawee

DISCLAIMER: PLANS SHOWN ARE FOR PRESENTATION PURPOSES AND ARE NOT PART OF ANY LEGAL DOCUMENT. ALL MEASUREMENTS AND FIGURES ARE APPROXIMATE.