



**1311/38-42 Bridge Street SYDNEY NSW**

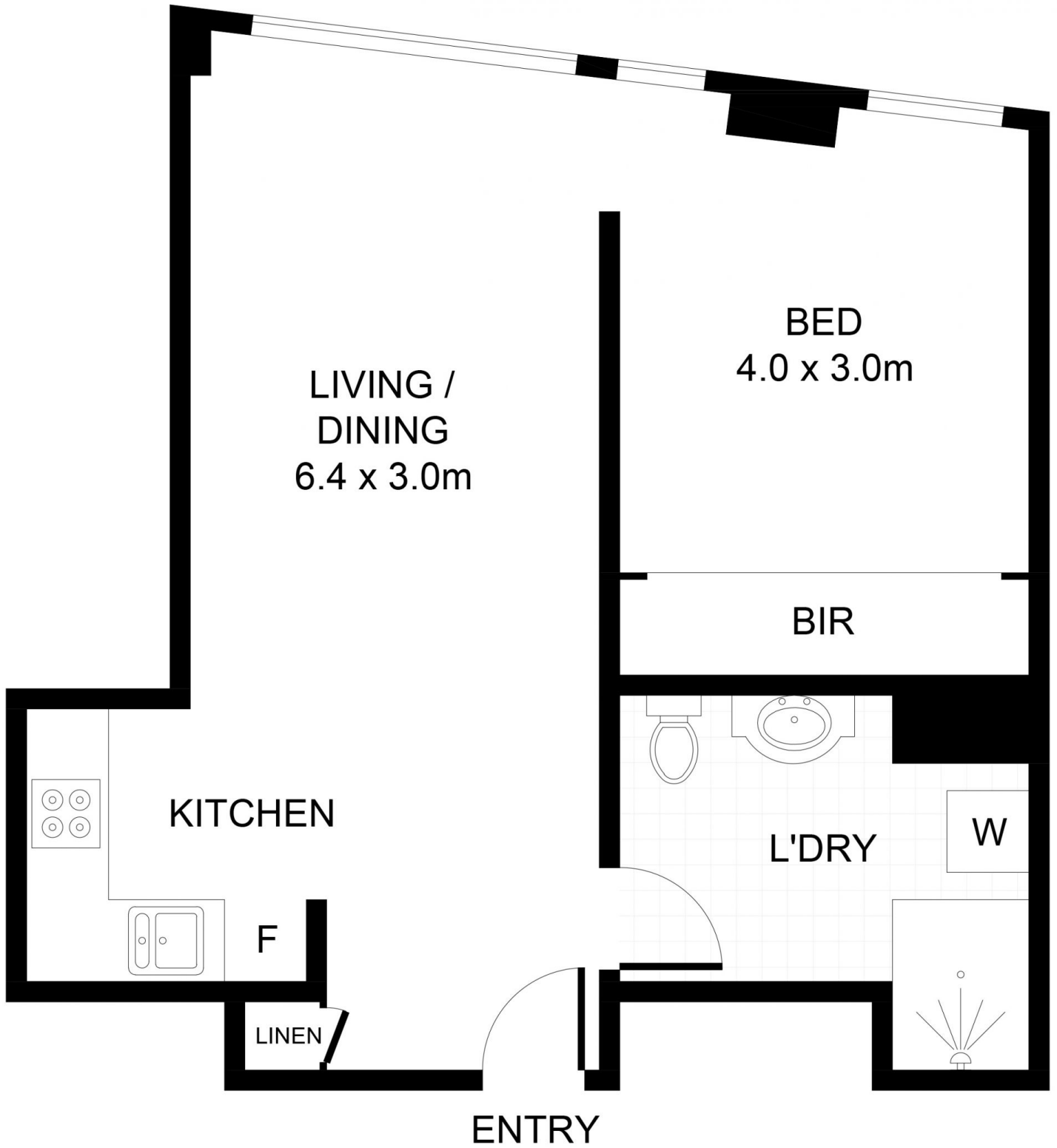
1 1

Conveniently positioned and well-proportioned this apartment is situated in the Bridgeport building overlooking Circular Quay and boasting spectacular Harbour views.

This is ideal for those looking for a cosmopolitan lifestyle or a perfect opportunity for the astute investor with many popular attractions all within an easy walk from your door.

- Open plan with light filled interiors and spectacular Harbour views
- Spacious bedroom with floor to ceiling built-in robe
- Bathroom with internal laundry - Ducted air conditioning throughout
- Secure building with on duty manager, lift and gymnasium

**Type** : Apartment  
**Building Size** : 5 sqm  
**View** : <https://www.jreproperty.com.au/sale/nsw/sydney-city/sydney/residential/apartment/7488954>



Bridge Street, Sydney

DISCLAIMER: PLANS SHOWN ARE FOR PRESENTATION PURPOSES AND ARE NOT PART OF ANY LEGAL DOCUMENT. ALL MEASUREMENTS AND FIGURES ARE APPROXIMATE.