



**3 Kenna Place GYMEA NSW**

5 2 3

Situated in a quiet cul-de-sac location yet an extremely central location resides this solid double brick two-story family home which is now being offered in original condition throughout and presents a wealth of opportunity for the buyer looking to renovate or design their dream home in the future. Walking distance to schools, shops, bus and rail.

**Land Size** : 613.4 sqm  
**View** : <https://www.jreproperty.com.au/sale/nsw/sutherland/gyMEA/residential/house/7488961>

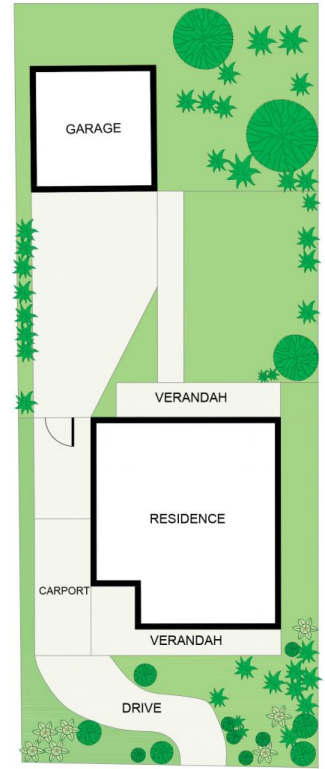
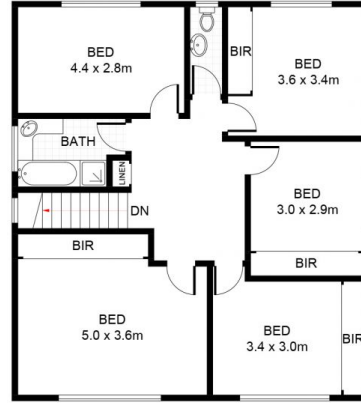
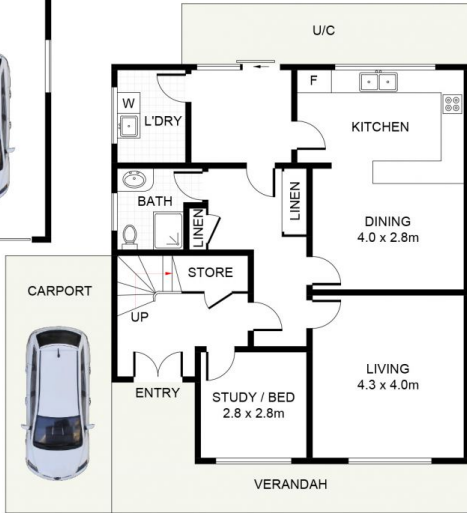
- \* Multiple living and dining options/ split A/C
- \* Spacious kitchen with great layout + casual dining
- \* Plenty of bedroom options 5 generous rooms + study
- \* Master bedroom with walk in wardrobe + A/C
- \* Double lock up garage with side drive access
- \* Level sunny grassed backyard + single carport



**Trent Jeffree**  
**02 9540 2222**



(NOT SHOWN IN ACTUAL LOCATION / ORIENTATION)



## Kenna Place, Gymea

DISCLAIMER: PLANS SHOWN ARE FOR PRESENTATION PURPOSES AND ARE NOT PART OF ANY LEGAL DOCUMENT. ALL MEASUREMENTS AND FIGURES ARE APPROXIMATE.