



2/241-245 Kingsway CARINGBAH NSW

2 1 1

Conveniently located this well-proportioned ground floor apartment presents a perfect choice for the first home buyers, downsizer or investor.

Light filled interiors throughout and benefiting from a Northerly and leafy aspect, this apartment is a short walk to Woollooware Golf Club and has buses at your door.

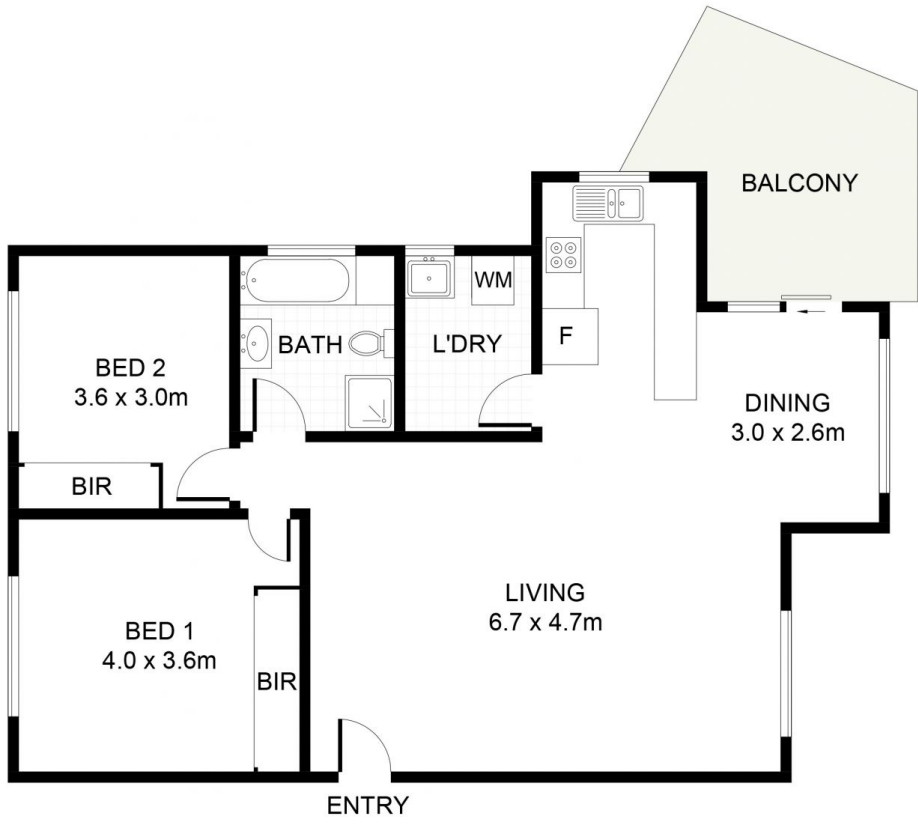
- * Spacious open plan living with plenty of natural light
- * North facing covered balcony with garden surrounds
- * Kitchen with adjoining dining area that leads to balcony
- * Well sized bedrooms, both with built in wardrobes
- * Single lock up garage in basement and security intercom
- * Unit size 95m2 + Garage 16m2 = Total 111m2
- * Strata \$681.75pq / Council \$340 pq

[For full version visit the website](https://www.jreproperty.com.au/sale/nsw/sutherland/caringbah/residential/apartment/7488962)

Type : Apartment
Building Size : 12 sqm
View : <https://www.jreproperty.com.au/sale/nsw/sutherland/caringbah/residential/apartment/7488962>



Luke Jeffree
02 9540 2222



(NOT SHOWN IN ACTUAL LOCATION / ORIENTATION)



Kingsway Caringbah

DISCLAIMER: PLANS SHOWN ARE FOR PRESENTATION PURPOSES AND ARE NOT PART OF ANY LEGAL DOCUMENT. ALL MEASUREMENTS AND FIGURES ARE APPROXIMATE.