



28/29-33 Corella Road KIRRAWEE NSW

1 1

Completely renovated throughout this 1 bedroom villa is quietly positioned in an over 60's complex and provides light filled interiors across the open floorplan.

This property is ideal for the buyer looking to downsize to a low maintenance single level with nothing to spend and just move in and relax.

Located in a whisper quiet family friendly street, walking distance to both Kirrawee and Gymea Village.

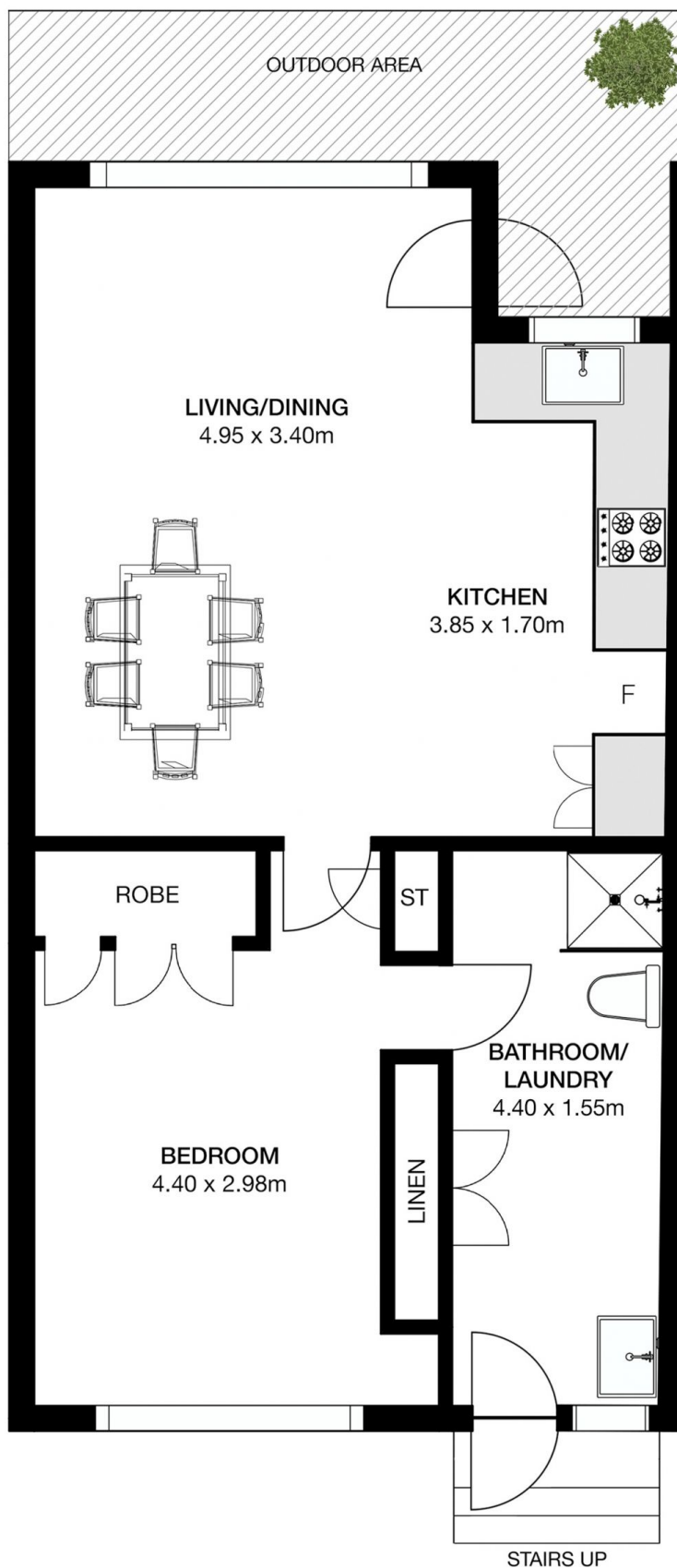
- * Completely renovated throughout with Plantation shutters
- * Light filled open plan living area and kitchen
- * Modern bathroom and laundry flowing to external clothesline
- * Unallocated parking area available and street parking
- * Split system air conditioning and pet friendly complex

Type : Villa
Building Size : 10 sqm
View : <https://www.jreproperty.com.au/sale/nsw/sutherland/kirrawee/residential/villa/7488964>



Trent Jeffree
02 9540 2222

[For full version visit the website](https://www.jreproperty.com.au)



Corella Road, Kirrawee

This is for illustrative purposes only. All dimensions are approximations. These illustrations do not constitute part of any legal documents.

