



17/1-9 Warburton Street GYMEA NSW

1 1 1

Situated in a perfect location to enjoy an easy lifestyle, this apartment enjoys an elevated ground floor location with a garden outlook. The property is ideally suited to both first home owners and investors.

- * Spacious living & dining area
- * Private balcony with garden outlook
- * Generous bedroom with built in wardrobe
- * Neat bathroom with internal laundry facilities
- * Walk to local shops, caf?'s, train station
- * Currently rented for \$1,629.46 per month
- * Strata \$528.80 per quarter
- * Size 17sqm garage + 55sqm internal total 72sqm

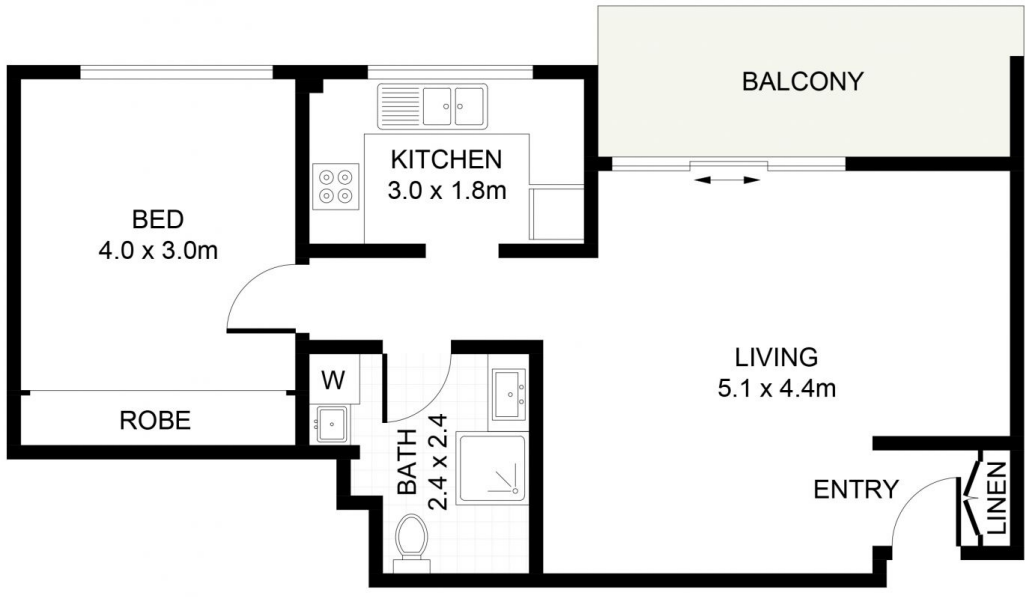
Type : Apartment

Price : \$ 550,000

View : <https://www.jreproperty.com.au/sale/nsw/sutherland/gyMEA/residential/apartment/7488965>



Luke Jeffree
02 9540 2222



(NOT SHOWN IN ACTUAL LOCATION / ORIENTATION)



17/1-9 Warburton Street, Gymea

DISCLAIMER: PLANS SHOWN ARE FOR PRESENTATION PURPOSES AND ARE NOT PART OF ANY LEGAL DOCUMENT. ALL MEASUREMENTS AND FIGURES ARE APPROXIMATE.