



18/725 Kingsway GYMEA NSW

2 1 2

Occupying a prime top floor position to the rear of the "Glenview Apartments", this substantial townhouse style apartment offers light filled areas and displays an interesting design. Comfort and unrivalled convenience whilst being immersed in leafy surrounds with distant city and water views, it promises easy everyday living and entertaining and a perfect base or investment opportunity in a sought after locale.

- * Light filled and open plan living & dining areas
- * 3 x private alfresco areas, with distant views
- * Timber kitchen with stainless appliances
- * 2 beds both with BIR's, main with balcony, neat bathroom
- * Internal laundry with 2nd W.C, security complex
- * Tandem garaging, short stroll Gymea village, rail &

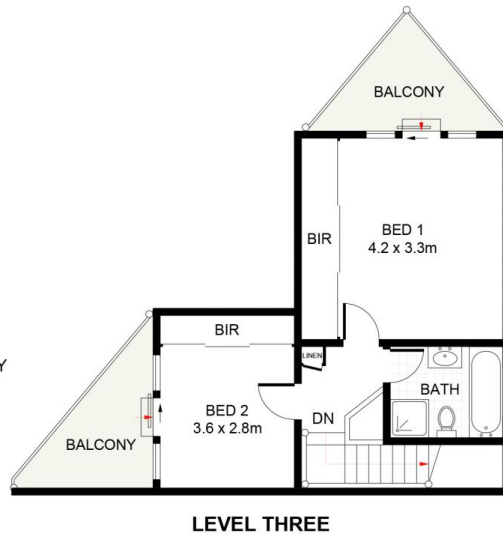
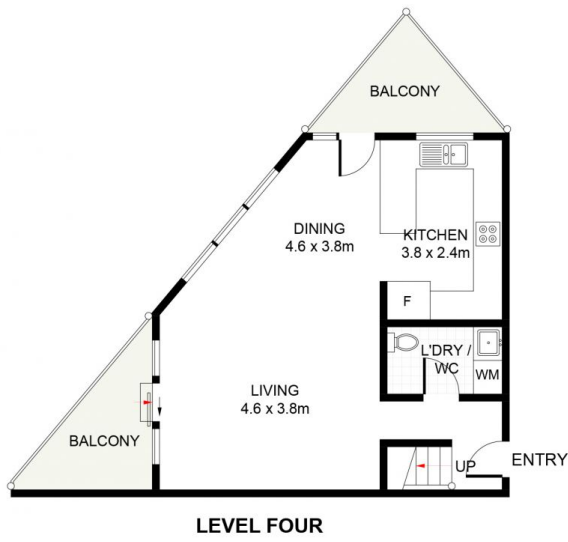
Type : Apartment

View : <https://www.jreproperty.com.au/sale/nsw/sutherland/gynea/residential/apartment/7488970>



Trent Jeffree
02 9540 2222

[For full version visit the website](#)



Kingsway, Gymea

DISCLAIMER: PLANS SHOWN ARE FOR PRESENTATION PURPOSES AND ARE NOT PART OF ANY LEGAL DOCUMENT. ALL MEASUREMENTS AND FIGURES ARE APPROXIMATE.