



**20 Bondell Avenue GYMEA NSW**

3 1 4

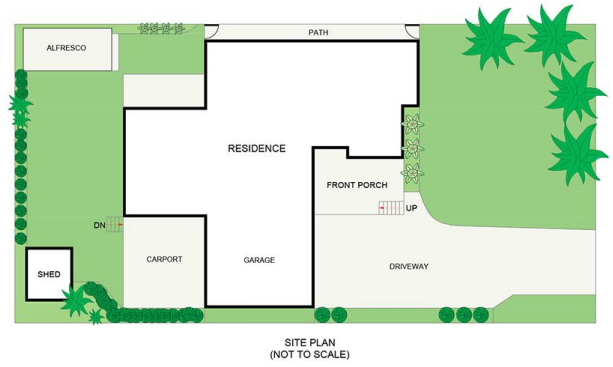
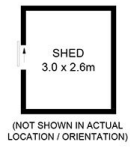
This impressive cottage has been well maintained throughout and proudly rests on a near level North facing block and within a tightly held dress circle location.

**Land Size** : 594 sqm  
**View** : <https://www.jreproperty.com.au/sale/nsw/sutherland/gyMEA/residential/house/7488972>

Providing light filled spacious interiors throughout this family home also boasts a sunny child friendly yard complete with gazebo to be enjoyed all year round surrounded by established trees and gardens.

Positioned in a quiet tree lined street and within easy walking distance to GyMEA Village, Parklands and Public Transport.

- \* Spacious foyer upon entry leading to a front living area
- \* Large combined dining and family room overlooking rear garden
- \* Central galley kitchen with gas cooktop and servery



20 Bondell Avenue, Gymea

DISCLAIMER: PLANS SHOWN ARE FOR PRESENTATION PURPOSES AND ARE NOT PART OF ANY LEGAL DOCUMENT. ALL MEASUREMENTS AND FIGURES ARE APPROXIMATE.