

158 Ellesmere Road GYMEA BAY NSW

4 2 2

Original home with stunning water views overlooking the large block of approximately 750 square meters right down to the waters edge which hosts a magnificent sandstone boat shed with jetty.

The home is set over two levels with kitchen and living areas, 3 bedrooms and bathroom on the upper level enjoying water views and separate living options with living, kitchenette, bedroom and bath on the lower level
If you're looking for a waterfront property with immense potential to renovate and reap the rewards then look no further

- * Original 70's condition throughout over 2 levels
- * Separate accommodation on lower level or easily convert

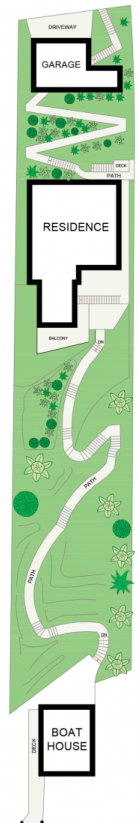
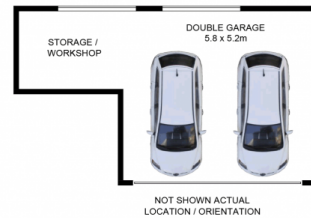
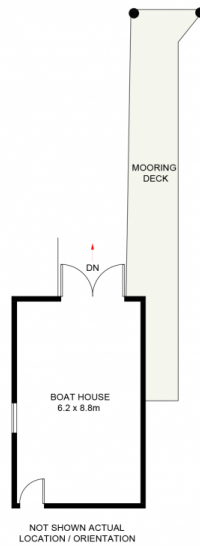
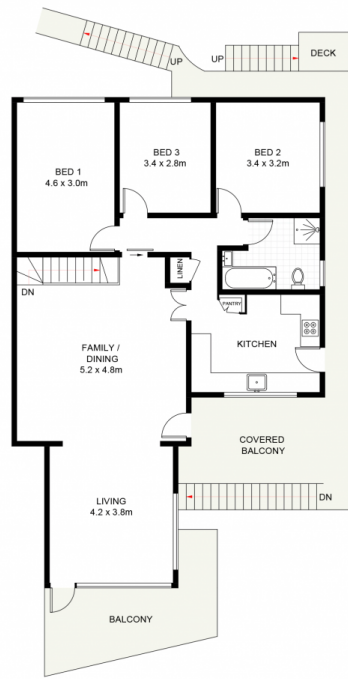
Type : House

View : <https://www.jreproperty.com.au/sale/nsw/sutherland-gyMEA-bay/residential/house/7488976>



Trent Jeffree
02 9540 2222

[For full version visit the website](https://www.jreproperty.com.au)



158 Ellesmere Road, GyMEA Bay

DISCLAIMER: PLANS SHOWN ARE FOR PRESENTATION PURPOSES AND ARE NOT PART OF ANY LEGAL DOCUMENT. ALL MEASUREMENTS AND FIGURES ARE APPROXIMATE.