



7/1-3 Chapman Street GYMEA NSW

1 1 1

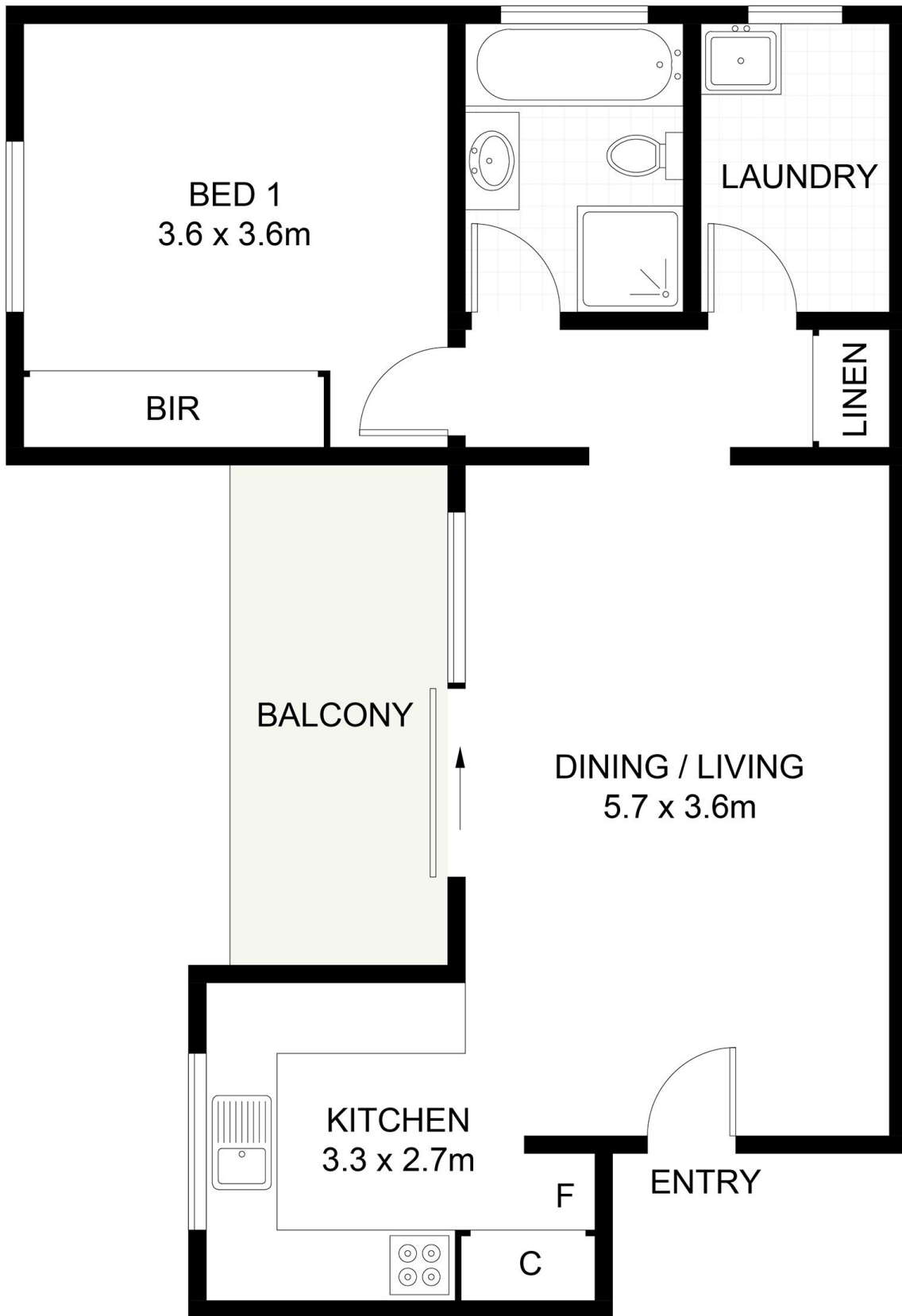
Looking to invest or make your first real estate purchase then look no further than this super affordable ground floor unit. Positioned in a convenient location literally only minutes walk to everything that popular Gymea Village has to offer. Complete with balcony & lock up garage you will find it hard to find better value.

Type : Apartment
Building Size : 7 sqm
View : <https://www.jreproperty.com.au/sale/nsw/sutherland/gymea/residential/apartment/7488978>

- * Positioned ground floor location, easy access
- * Generous bedroom with built in wardrobe
- * Internal laundry, private balcony
- * Well maintained security building strata complex
- * Walking distance to Gymea Village & transport
- * Floor 63m2 + Garage 17m2 = Total 80m2
- * Strata levies - \$647.54 per quarter



Luke Jeffree
02 9540 2222



7/1-3 Chapman Street, Gymea

DISCLAIMER: PLANS SHOWN ARE FOR PRESENTATION PURPOSES AND ARE NOT PART OF ANY LEGAL DOCUMENT. ALL MEASUREMENTS AND FIGURES ARE APPROXIMATE.