



19B Waratah Street KIRRAWEE NSW

3 1 1

Situated at the back of a small strata complex and enhanced by its private north facing huge outdoor area which will appeal to families with young children. Its easy-care interior layout is generously proportioned and promises easy everyday living and entertaining and a perfect base or investment opportunity.

- * Combined family living and casual dining area
- * Galley kitchen with plenty of cupboards
- * 3 large bedrooms all with built in wardrobes
- * North facing sizable paved & grassed courtyard
- * Single lock up garage with internal access

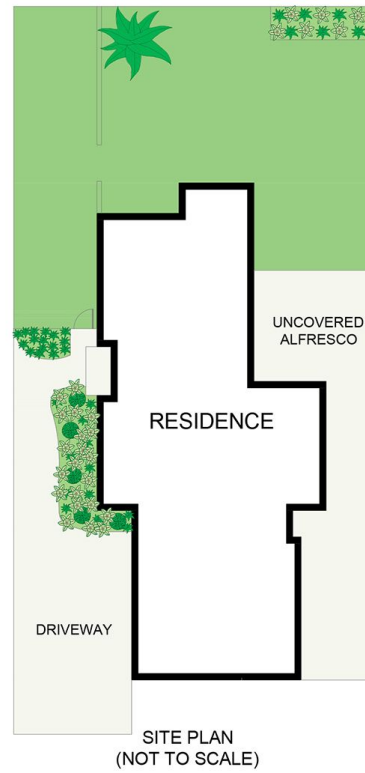
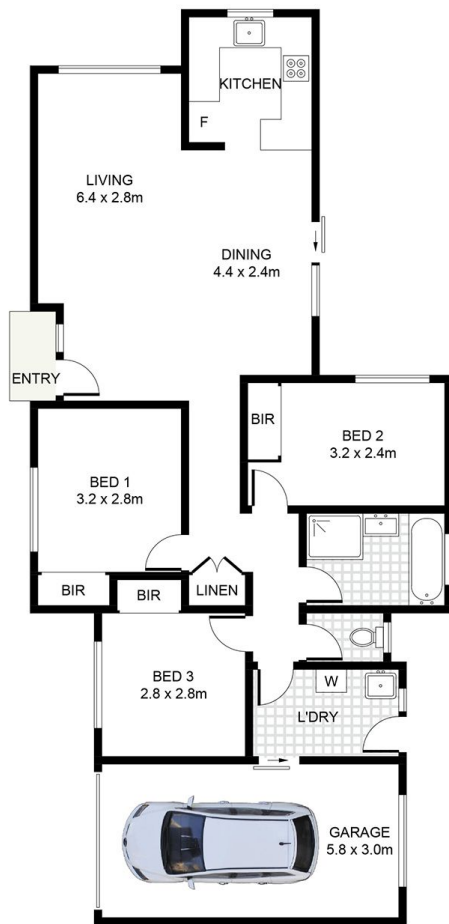
Strata Levies : \$661.13 p/q
Council Levies : \$342.20 p/q

[For full version visit the website](https://www.jreproperty.com.au)

Type : Villa
Land Size : 242 sqm
View : <https://www.jreproperty.com.au/sale/nsw/sutherlandland/kirrawee/residential/villa/7488984>



Trent Jeffree
02 9540 2222



19B Waratah Street, Kirrawee

DISCLAIMER: PLANS SHOWN ARE FOR PRESENTATION PURPOSES AND ARE NOT PART OF ANY LEGAL DOCUMENT. ALL MEASUREMENTS AND FIGURES ARE APPROXIMATE.