



**27 Cudjee Road GYMEA BAY NSW**

5 3

This terrific tri-level home proudly sits with an elevated north facing outlook and is peacefully placed in an exclusive bayside community. With a functional family floorplan this home offers numerous choices of living spaces including a number of entertaining areas and day to day family living zones to suit the majority of families. Resting on a deep level block and at the end of a cul-de-sac street, it utilises its stunning large pool as a focal point and multiple alfresco decks and balconies binding the entertaining areas all together.

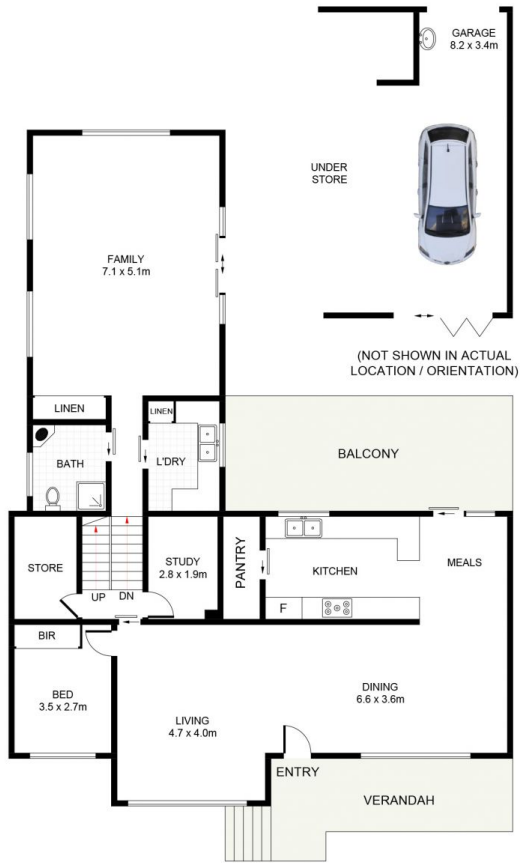
**Type** : House  
**Land Size** : 645 sqm  
**View** : <https://www.jreproperty.com.au/sale/nsw/sutherland/gymea-bay/residential/house/7488987>

- \* 5 large bedrooms all with built in wardrobes & ceiling fans
- \* An abundance of indoor and outdoor living and dining options



**Luke Jeffree**  
02 9540 2222

[For full version visit the website](https://www.jreproperty.com.au)



GROUND FLOOR



FIRST FLOOR



27 Cudjee Road, Gymea Bay

DISCLAIMER: PLANS SHOWN ARE FOR PRESENTATION PURPOSES AND ARE NOT PART OF ANY LEGAL DOCUMENT. ALL MEASUREMENTS AND FIGURES ARE APPROXIMATE.