



39 Ellesmere Road GYMEA BAY NSW

4 1 2

Peacefully positioned near the popular Gymea Baths this loved family home has been well maintained and is offered for the first time in over 45 years.

The floorplan accommodates a spacious kitchen with adjoining dining/casual living overlooking the backyard and an additional living currently used a fourth bedroom at the front.

Set on a generous 689.2sqm parcel of land with a sunny rear yard that provides plenty of scope to extend the home or add an outdoor entertaining area.

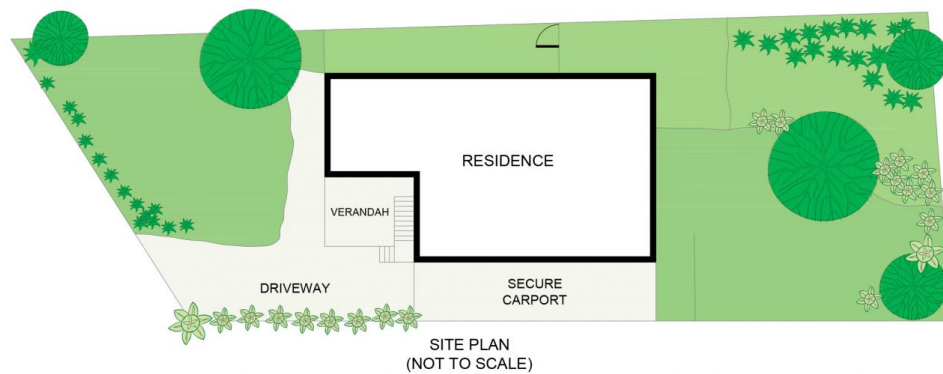
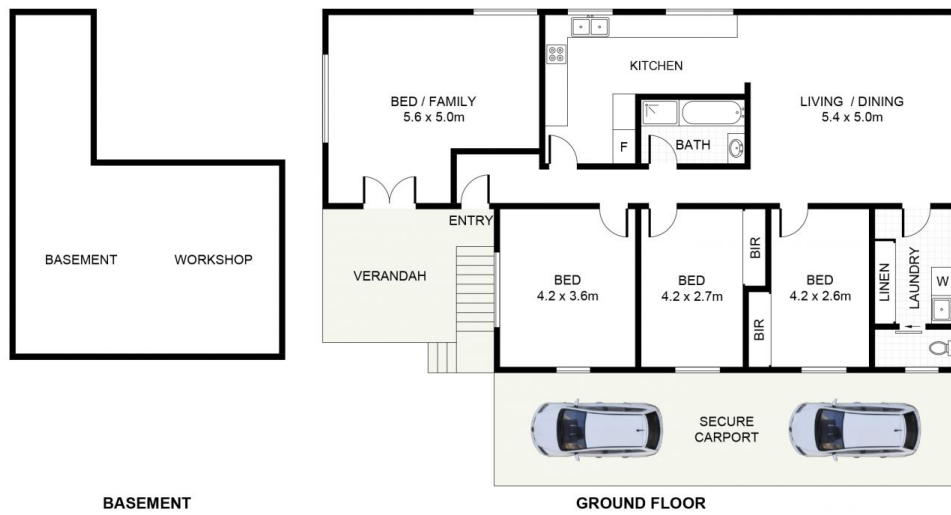
* Spacious kitchen with casual living and dining area overlooking the rear yard

[For full version visit the website](https://www.jreproperty.com.au/sale/nsw/sutherlandland/gymea-bay/residential/house/7488991)

Type : House
Land Size : 689.2 sqm
View : <https://www.jreproperty.com.au/sale/nsw/sutherlandland/gymea-bay/residential/house/7488991>



Luke Jeffree
02 9540 2222



Ellesmere Road, GyMEA Bay

DISCLAIMER: PLANS SHOWN ARE FOR PRESENTATION PURPOSES AND ARE NOT PART OF ANY LEGAL DOCUMENT. ALL MEASUREMENTS AND FIGURES ARE APPROXIMATE.