



**301 President Avenue GYMEA NSW**

3 2 2

Situated in a central location in close proximity to the popular Gymea Village shops, cafes and transport this single level home has been tastefully updated and will suit a young growing family or ideal first home buyer opportunity.

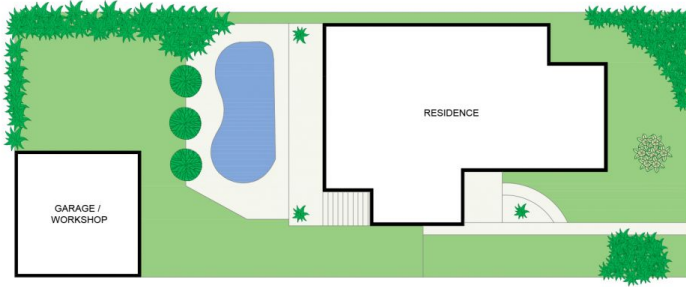
The accommodation provides an updated open plan design boasting an abundance of natural light throughout with a bright sunny North facing rear yard with level grass lawns, in ground pool and garage/workshop.

Inspection parking around the corner at Manchester Rd with 150m level walk

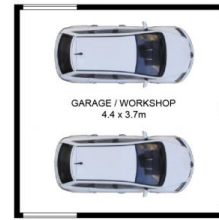
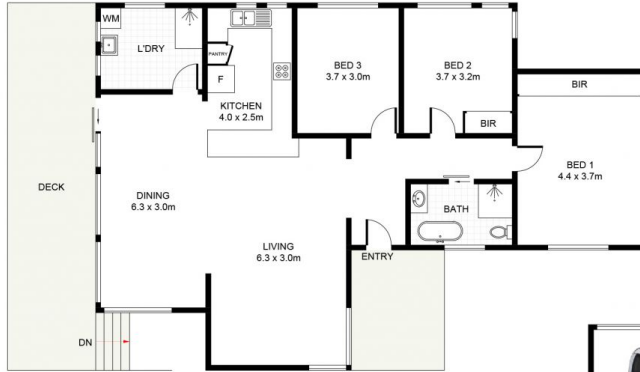
- Spacious light filled open plan living with polished timber floors throughout

**Type** : House  
**Land Size** : 670 sqm  
**View** : <https://www.jreproperty.com.au/sale/nsw/sutherland/gymea/residential/house/7489000>

[For full version visit the website](https://www.jreproperty.com.au)



SITE PLAN  
(NOT TO SCALE)



(NOT SHOWN IN ACTUAL  
LOCATION / ORIENTATION)



## 301 President Avenue, Gymea

DISCLAIMER: PLANS SHOWN ARE FOR PRESENTATION PURPOSES AND ARE NOT PART OF ANY LEGAL DOCUMENT. ALL MEASUREMENTS AND FIGURES ARE APPROXIMATE.