



130 Manchester Road GYMEA NSW

3 2 2

This stylish and practical, single level home offers immense appeal. Quality renovations and fresh, bright interiors complement this cosy and inviting abode. Tranquil, private alfresco area with a detached teenage retreat or home office.

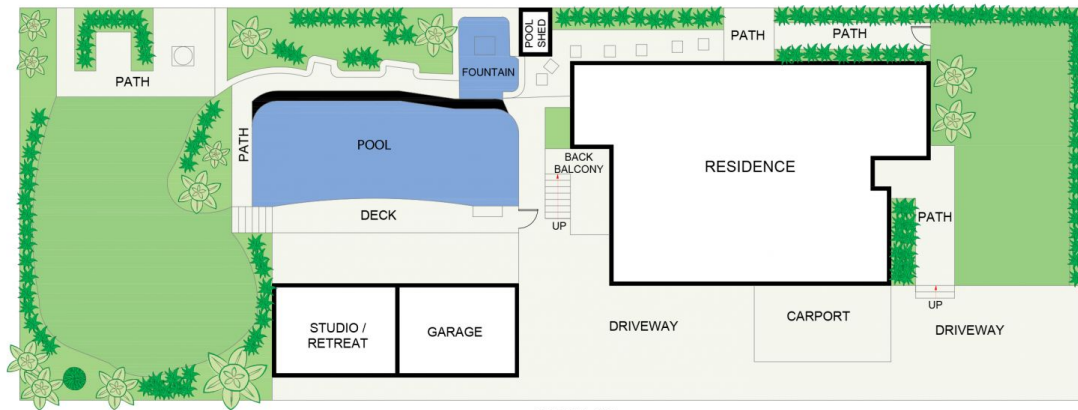
Situated in a highly sought after location in GyMEA, within walking distance to GyMEA's boutique shops, cafes and transport.

- * Open plan living and dining, with polished floorboards throughout.
- * Updated kitchen with Caesarstone bench and stainless appliances.
- * Three generously sized bedrooms, all with ceiling fans.
- * Master bedroom with walk-in robe and ensuite.
- * Renovated bathrooms with floor to ceiling tiles.

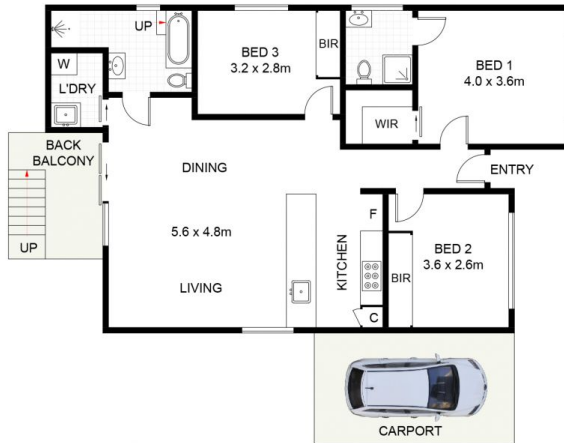
Land Size : 632 sqm
View : <https://www.jreproperty.com.au/sale/nsw/sutherland/gyMEA/residential/house/7489001>



Dion Moon
02 9540 2222



SITE PLAN
(NOT TO SCALE)



(NOT SHOWN IN ACTUAL LOCATION / ORIENTATION)



130 Manchester Road, GyMEA

DISCLAIMER: PLANS SHOWN ARE FOR PRESENTATION PURPOSES AND ARE NOT PART OF ANY LEGAL DOCUMENT. ALL MEASUREMENTS AND FIGURES ARE APPROXIMATE.