

16/11-15 Chapman Street GYMEA NSW

2 2 2

Set over two levels and perfectly designed for shared living with a large bedroom and bathroom on ground level and a further bedroom with balcony and bathroom on the second floor.

The spacious open plan living provides a Caesar kitchen with adjoining living and dining that leads a sunny paved courtyard with established gardens.

Located in a highly sought-after area close to GyMEA shops, cafes and public transport this property is flawlessly presented and absolutely nothing to do but move in and relax and enjoy a low maintenance lifestyle.

* Open plan living and dining area leading to the outdoor

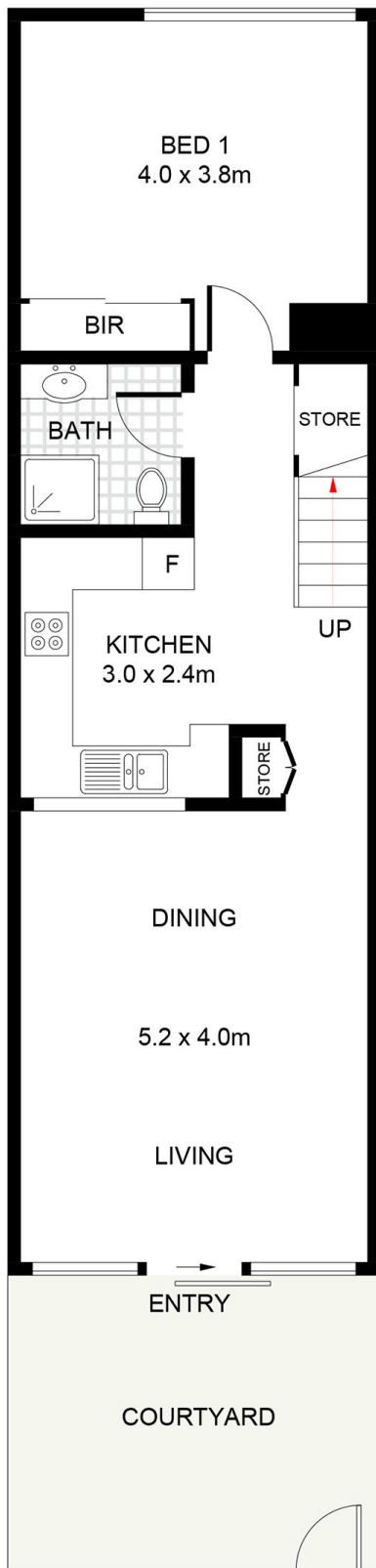
Type : Apartment

View : <https://www.jreproperty.com.au/sale/nsw/sutherland/gyMEA/residential/apartment/7489007>

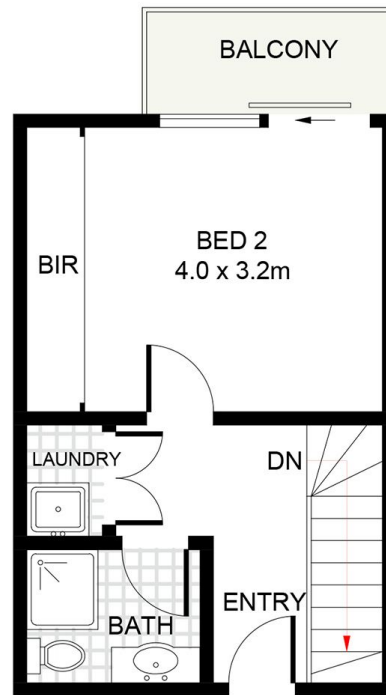


Trent Jeffree
02 9540 2222

[For full version visit the website](https://www.jreproperty.com.au)



GROUND FLOOR



FIRST FLOOR



LOWER GROUND FLOOR



16/11-15 Chapman Street, Gymea

DISCLAIMER: PLANS SHOWN ARE FOR PRESENTATION PURPOSES AND ARE NOT PART OF ANY LEGAL DOCUMENT. ALL MEASUREMENTS AND FIGURES ARE APPROXIMATE.