



2/231-233 Kingsway CARINGBAH NSW

2 1 1

Looking to purchase in an ideal sort after central location?

Presenting this spacious ground floor garden apartment that would suit a first home owner, investor or downsizer looking for ground floor apartment.

Just move in, relax and enjoy this low maintenance, easy living lifestyle within close proximity to Caringbah village, bus, train and minutes to Cronulla Beach.

- * Spacious combined lounge and dining area
- * Light filled bedrooms with built in wardrobes
- * Modern neat kitchen with ample bench space
- * Internal laundry with additional WC
- * Secure complex with intercom and lock up garage

[For full version visit the website](https://www.jreproperty.com.au)

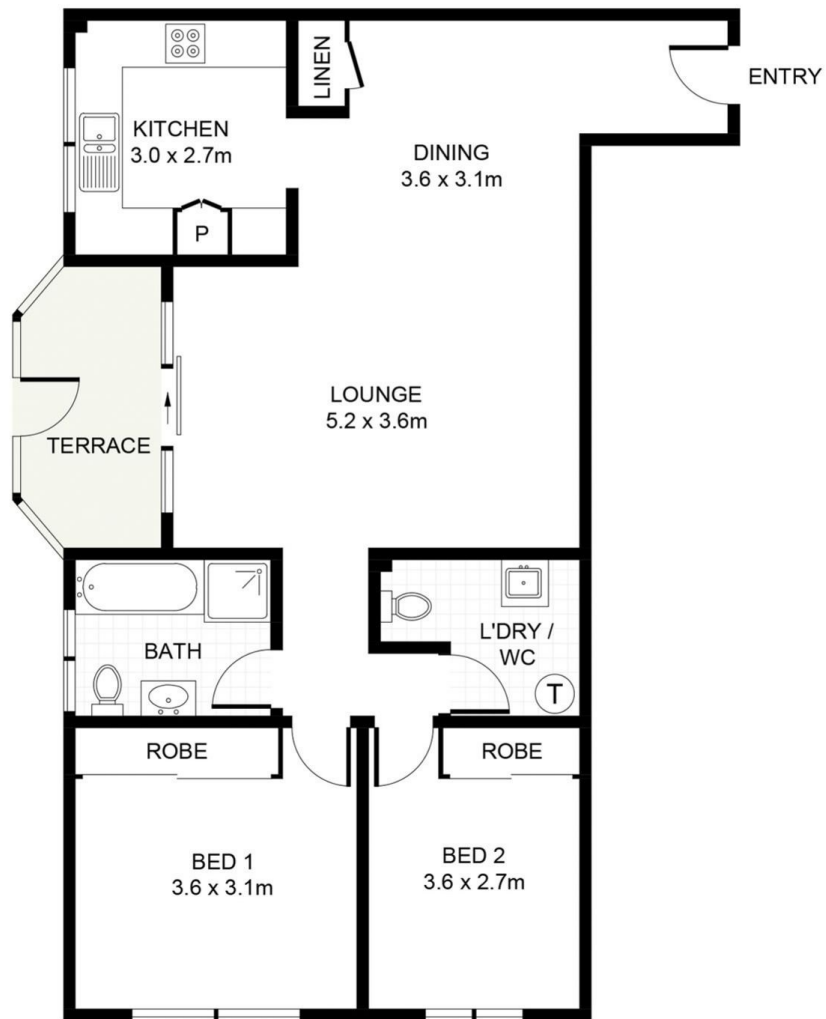
Type : Apartment
Building Size : 9 sqm
View : <https://www.jreproperty.com.au/sale/nsw/sutherland/caringbah/residential/apartment/7489024>



Trent Jeffree
02 9540 2222



(NOT SHOWN IN ACTUAL
LOCATION / ORIENTATION)



GROUND FLOOR

