



### 3 Kenna Place GYMEA NSW

5 2 3

A modern beauty second to none, this magnificent residence offers living of an exceptional calibre. Presenting as new, it features gorgeous timber look floors through central interiors, sleek stone island in the high-quality kitchen and effortless flow to the entertainers' balcony for ultimate outdoor enjoyment.

Recently renovated top to bottom fusing a stylish Hampton's theme while outdoors boasts a level grass lawn complete with stunning newly planted gardens, leaving nothing to but plan your outdoor space or decide where to add a pool if one desires.

Close proximity to Gymea village with an array of shops, Caf?'s and train station just 850 metres.

**Type** : House  
**Land Size** : 613.4 sqm  
**View** : <https://www.jreproperty.com.au/sale/nsw/sutherland/gymea/residential/house/7489029>

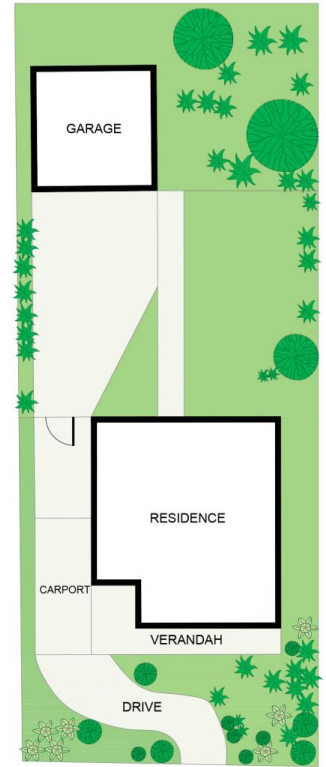
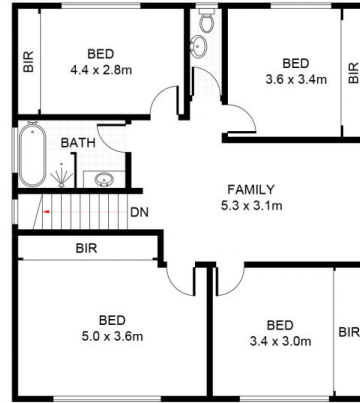
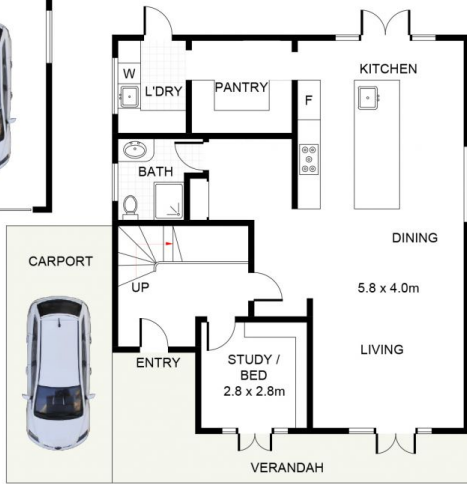


**Trent Jeffree**  
02 9540 2222

[For full version visit the website](https://www.jreproperty.com.au)



(NOT SHOWN IN ACTUAL  
LOCATION / ORIENTATION)



## 3 Kenna Place, Gymea

DISCLAIMER: PLANS SHOWN ARE FOR PRESENTATION PURPOSES AND ARE NOT PART OF ANY LEGAL DOCUMENT. ALL MEASUREMENTS AND FIGURES ARE APPROXIMATE.