



16/10-14 Warburton Street GYMEA NSW

2 1 1

Tucked away yet incredibly convenient, this spacious apartment is situated on the second floor and affords an easy-care lifestyle with amenities all at your door. An expansive living and dining area on entry which gives this apartment a fantastic sense of space and also leads to a balcony privately positioned at the rear of the complex. Experience a low maintenance lifestyle in the vibrant GyMEA Village, with 300 metres to GyMEA train station or relax in one of the nearby cafes or Hazlehurst gallery's gardens at the end of your street.

- * First floor positioned apartment with an expansive flowing floor plan
- * Generous modern kitchen with breakfast bar adjoining the dining area

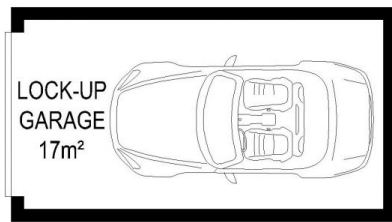
Type : Apartment

View : <https://www.jreproperty.com.au/sale/nsw/sutherland/gyMEA/residential/apartment/7489030>

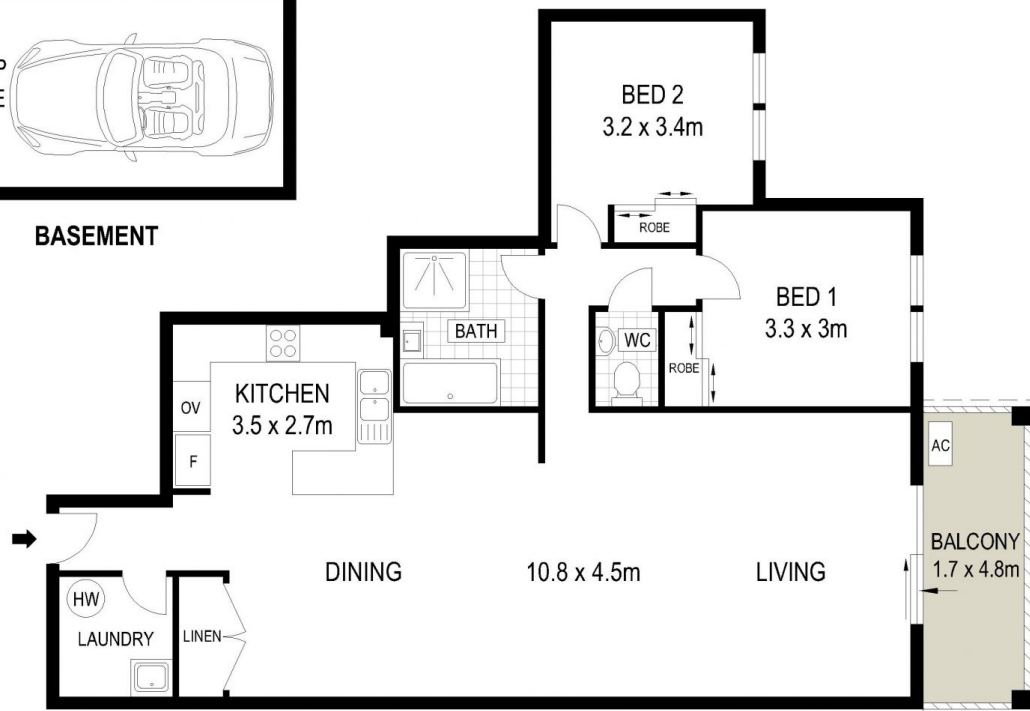


Luke Jeffree
02 9540 2222

[For full version visit the website](https://www.jreproperty.com.au)



BASEMENT



LEVEL ONE

ADDRESS:

16/10 -14 Warburton Street, GYMEA



DISCLAIMER: THIS IS FOR ILLUSTRATIVE PURPOSES ONLY, ALL DIMENSIONS ARE APPROXIMATE AND IT DOES NOT CONSTITUTE PART OF ANY LEGAL DOCUMENTS.