



24 Carter Crescent GYMEA BAY NSW

4 2 1

Boasting a spacious floorplan this substantial home oozes character and cape cod charm and within a highly sought-after position with schools, shops and parklands all close by.

Multiple downstairs living areas with interconnecting rooms that open via partition doors offers space to accommodate a growing family or intimate spaces to enjoy.

Prominently sitting on a generous 873sqm parcel of land, providing great outdoor space with a level sunny rear yard, established trees and gardens which surround the inground salt pool.

- Formal and casual living and kitchen with combined on ground level
- Generous bedrooms upstairs complete with built-in robes and ceiling fans

Type : House
Land Size : 873 sqm
View : <https://www.jreproperty.com.au/sale/nsw/sutherland/gyMEA-bay/residential/house/7489042>

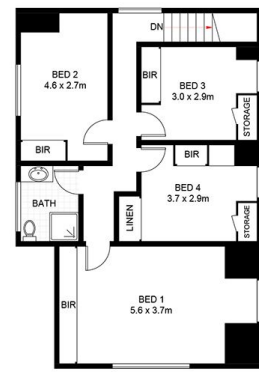


Luke Jeffree
02 9540 2222

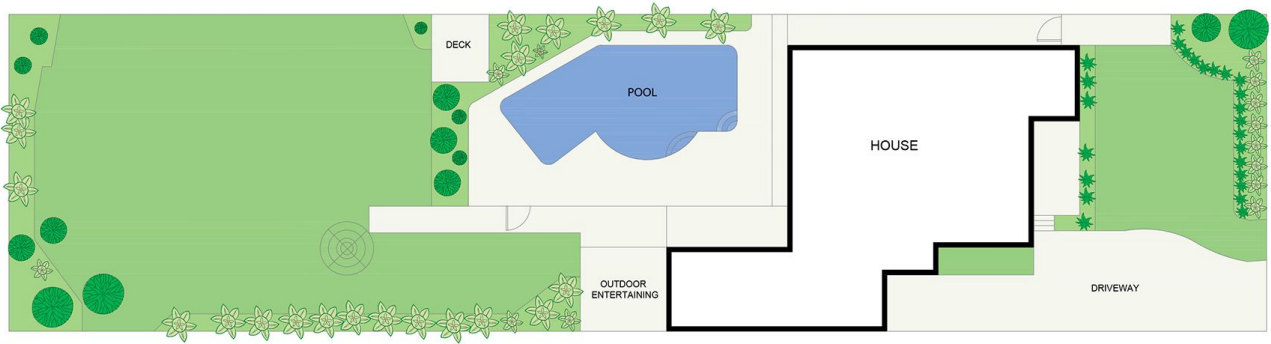
[For full version visit the website](https://www.jreproperty.com.au)



GROUND FLOOR



FIRST FLOOR



SITE PLAN
(NOT TO SCALE)



24 Carter Crescent, Gymea Bay

DISCLAIMER: PLANS SHOWN ARE FOR PRESENTATION PURPOSES AND ARE NOT PART OF ANY LEGAL DOCUMENT. ALL MEASUREMENTS AND FIGURES ARE APPROXIMATE.