



**1/192-194 Sylvania Road MIRANDA NSW**

**3** **2** **2**

Prominently positioned in a boutique complex of only six, this impressive townhouse displays comfortable and convenient living and light filled interiors throughout.

The accommodation provides open plan living, dining and kitchen that lead to the covered timber deck drenched by natural light and adjoining private courtyard with level grass lawn and established gardens.

- \* Spacious living on entry with adjoining dining that leads to the timber deck
- \* Modern kitchen with stone counter tops and stainless-steel appliances
- \* 3 Bedrooms all with built-in robes and master with ensuite and balcony

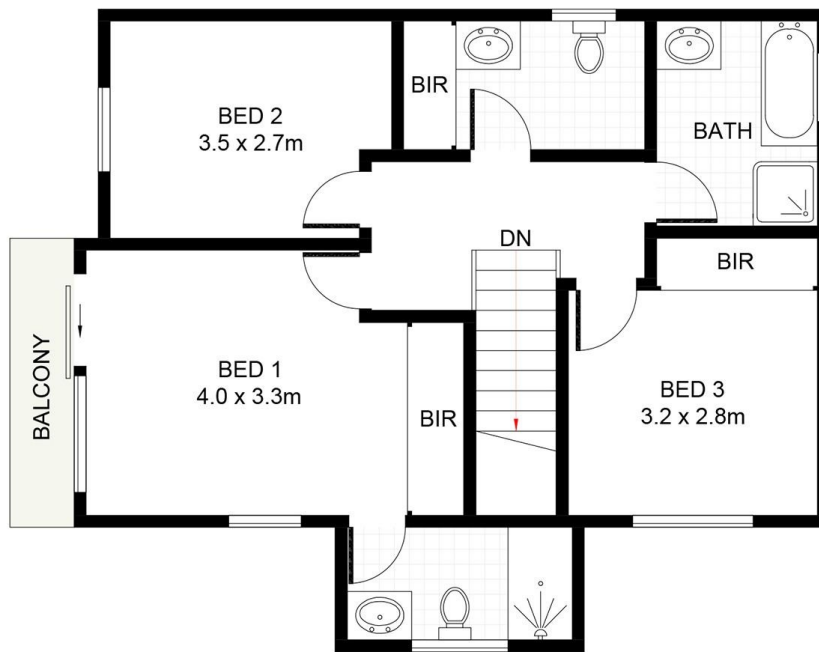
**Type** : Townhouse

**View** : <https://www.jreproperty.com.au/sale/nsw/sutherland/miranda/residential/townhouse/7489043>

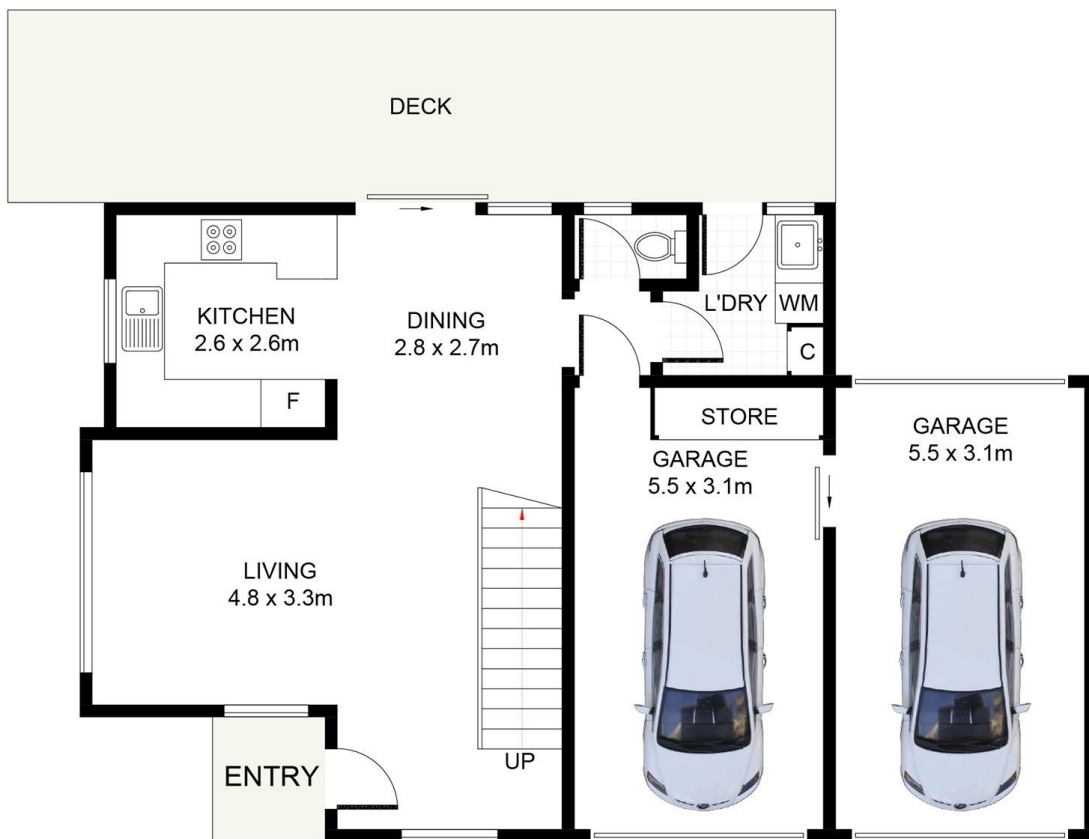


**Luke Jeffree**  
**02 9540 2222**

[For full version visit the website](https://www.jreproperty.com.au)



**FIRST FLOOR**



**GROUND FLOOR**



**1/192-194 Sylvania Road, Miranda**

DISCLAIMER: PLANS SHOWN ARE FOR PRESENTATION PURPOSES AND ARE NOT PART OF ANY LEGAL DOCUMENT. ALL MEASUREMENTS AND FIGURES ARE APPROXIMATE.