



33 Valley Way GYMEA BAY NSW

5 3 2

Family Home in Idyllic Locale

Perfectly positioned and boasting a private leafy outlook and stunning water views over Gymea Baths, this family residence was built in 1987 by its current original owner and has been meticulously maintained throughout. Effortlessly sprawling over three generous tiered levels, this family home offers multiple interconnecting formal and casual living areas with additional entertaining and rumpus and promises an abundance of space for the growing family looking to secure in an idyllic locale.

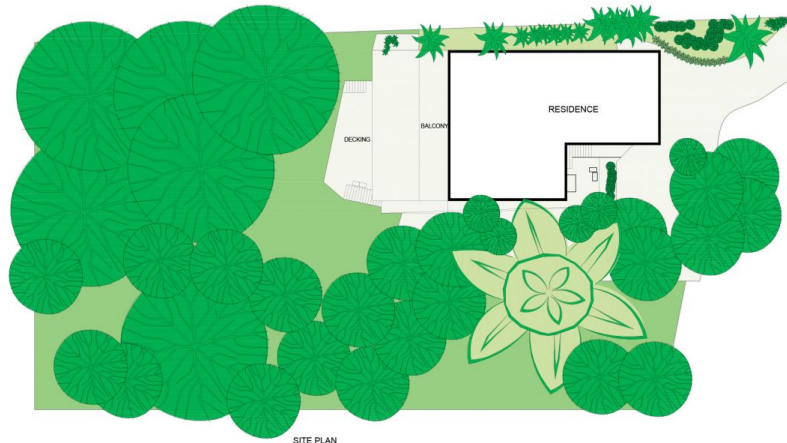
- Casual and formal living and dining areas with additional rumpus/entertaining
- Spacious kitchen with quality stone countertops and

[For full version visit the website](https://www.jreproperty.com.au)

Type : House
Land Size : 600 sqm
View : <https://www.jreproperty.com.au/sale/nsw/sutherland/gymea-bay/residential/house/7489044>



Luke Jeffree
02 9540 2222



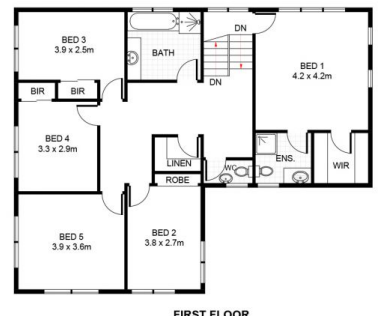
SITE PLAN
(NOT TO SCALE)



LOWER GROUND FLOOR



GROUND FLOOR



FIRST FLOOR



33 Valley Way, GyMEA Bay

DISCLAIMER: PLANS SHOWN ARE FOR PRESENTATION PURPOSES AND ARE NOT PART OF ANY LEGAL DOCUMENT. ALL MEASUREMENTS AND FIGURES ARE APPROXIMATE.