



1/16-18 Kiara Road MIRANDA NSW

2 1 1

This first floor 2 bedroom apartment enjoys a sunny aspect and is only 10 minutes walk to Miranda station. Newly renovated kitchen adjoins internal laundry, 2 roomy bedrooms with built-in robes, combined lounge dining opening to a north facing balcony, located at the front of a security building and with lock-up garage.

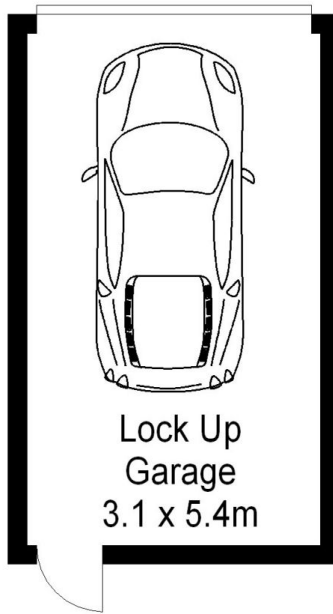
Building Size : 8 sqm
View : <https://www.jreproperty.com.au/sale/nsw/sutherland/miranda/residential/apartment/7489049>

- * 650 metres to Miranda railway station
- * Sundrenched North aspect
- * Newly renovated kitchen
- * Lock-up garage
- * Private Balcony
- * Internal laundry
- * Floor 70m² + Garage 18m² = 88m² total

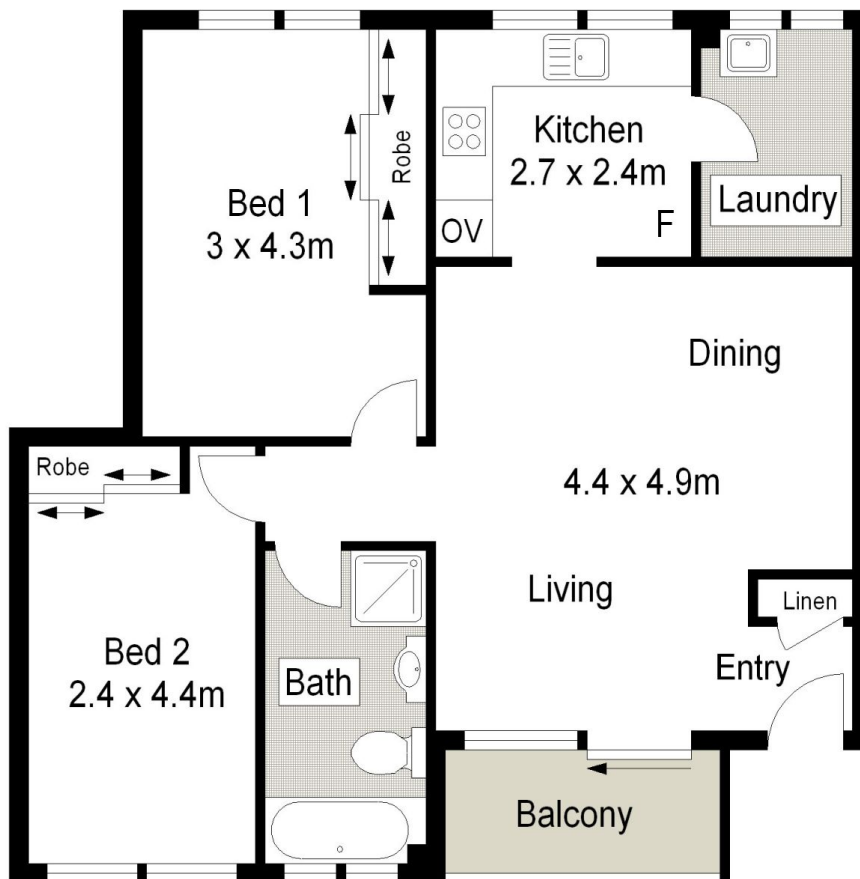
Rates : Strata \$667.75 p/q | Council \$ 348.10 p/q | Water \$146.29 p/q



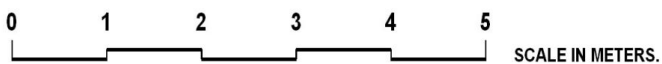
Trent Jeffree
02 9540 2222



GROUND FLOOR



FIRST FLOOR



Scale in metres. Indicative only. Dimensions are approximate. All information contained herein is gathered from sources we believe to be reliable. However we cannot guarantee its accuracy and interested persons should rely on their own enquiries.



1/16 Kiora Road, Miranda