



### 93 North West Arm Road GYMEA NSW

3 1 1

This beautifully maintained character brick residence offers an elevated leafy aspect in a highly sought and convenient location offering comfortable living now and endless opportunity for the future.

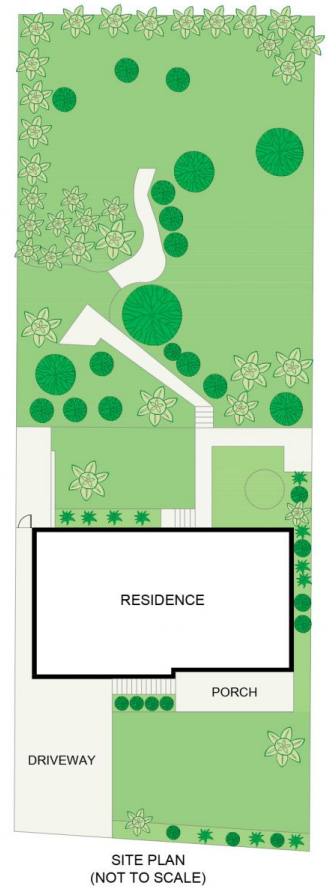
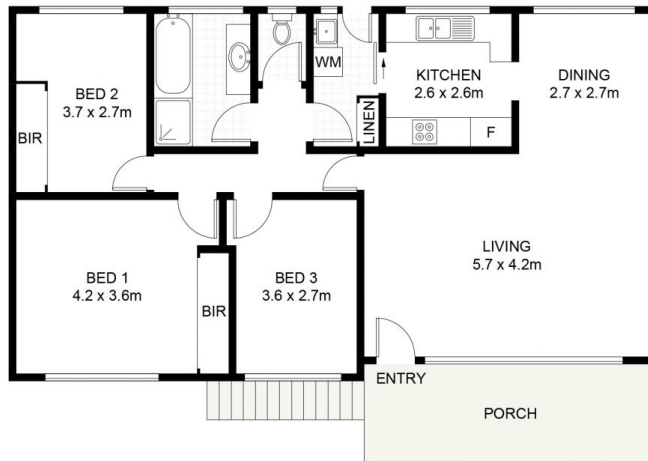
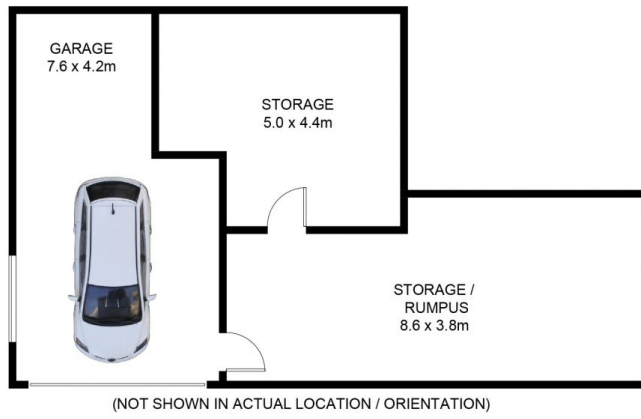
The property boasts a light and welcoming living and dining area with separate galley style kitchen featuring electric cooking appliances. Three ample bedrooms share the family bathroom with separate shower, bath and WC. The lower level of the home offers a double lock up garage with work area plus enormous storage or rumpus area. Completing the property are the beautifully manicured and maintained gardens, creating the perfect combination of lush green spaces for the family and easy to maintain garden beds.

**Type** : House  
**Land Size** : 632.3 sqm  
**View** : <https://www.jreproperty.com.au/sale/nsw/sutherland/gyMEA/residential/house/7489052>



**Trent Jeffree**  
02 9540 2222

[For full version visit the website](https://www.jreproperty.com.au)



93 North West Arm Road, Gymea

DISCLAIMER: PLANS SHOWN ARE FOR PRESENTATION PURPOSES AND ARE NOT PART OF ANY LEGAL DOCUMENT. ALL MEASUREMENTS AND FIGURES ARE APPROXIMATE.