



19 Narooma Place GYMEA BAY NSW

4 1 2

Four bedroom home amongst the treetops

With a spectacular verdant outlook that spans over two expansive levels of the property, this near original, four-bedroom property offers a perfectly lush landscape view and a home that you can embrace or transform. The choice is yours.

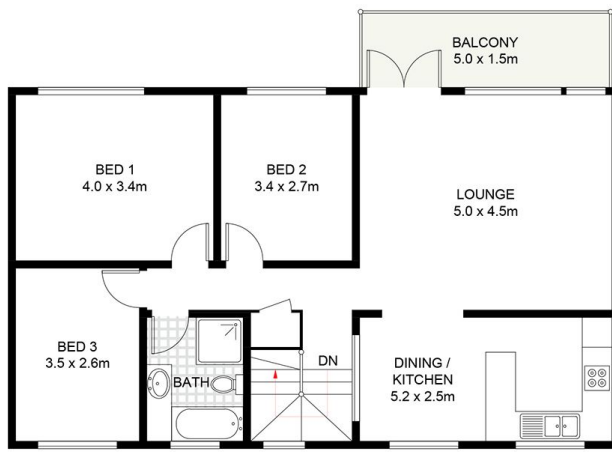
Set back from the road and providing a private entrance from the double carport, the ground level offers a large rumpus area, full-length panoramic windows leading out to the grassed rear yard. A double bedroom or home office with separate access and WC provides the perfect blueprint for work from home or self-contained, generational living options.

[For full version visit the website](https://www.jreproperty.com.au)

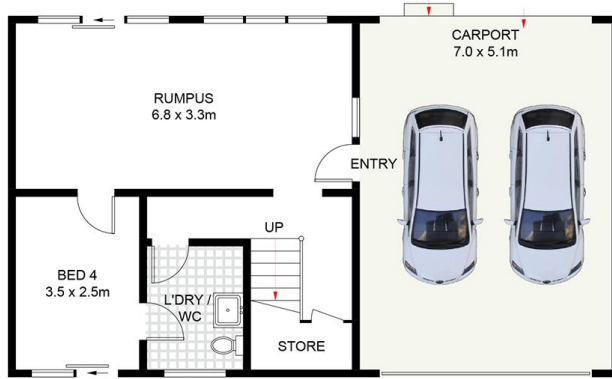
Type : House
Land Size : 385 sqm
View : <https://www.jreproperty.com.au/sale/nsw/sutherland/gymea-bay/residential/house/7489053>



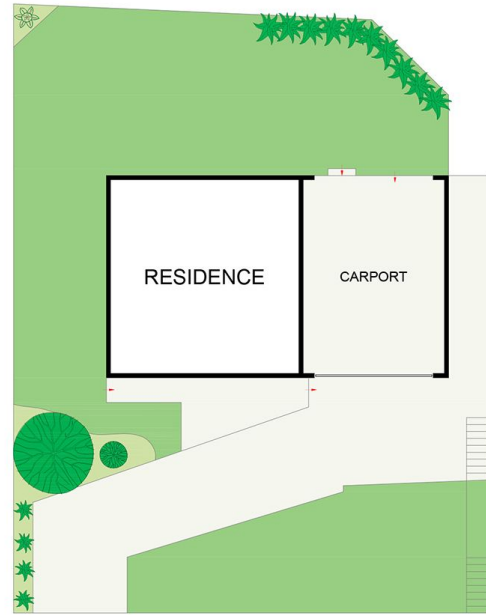
Luke Jeffree
02 9540 2222



FIRST FLOOR



GROUND FLOOR



SITE PLAN
(NOT TO SCALE)



19 Narooma Place, Gymea Bay

DISCLAIMER: PLANS SHOWN ARE FOR PRESENTATION PURPOSES AND ARE NOT PART OF ANY LEGAL DOCUMENT. ALL MEASUREMENTS AND FIGURES ARE APPROXIMATE.