



214 Gymea Bay Road GYMEA BAY NSW

3 1 1

Perfectly positioned and lovingly renovated, this 3 bedroom family home offers recreation and privacy in a highly sought after pocket of Gymea Bay. A securely enclosed and landscaped front garden welcomes, whilst an inviting entrance showcases a neutral palette, sumptuous hardwood floors and custom plantation shutters that feature throughout the home and give the property its modern, coastal charm and aesthetic.

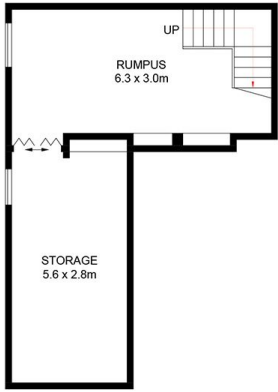
The central hub of the home belongs to the light-filled entertainer's kitchen, which features custom cabinetry, stainless steel appliances and induction cooktop and shares its sunny Northerly aspect with the informal breakfast bar, meals and family area whilst also opening to the formal dining and lounge spaces, giving the ability to

Type : House
Land Size : 600.7 sqm
View : <https://www.jreproperty.com.au/sale/nsw/sutherland/gymea-bay/residential/house/7489054>

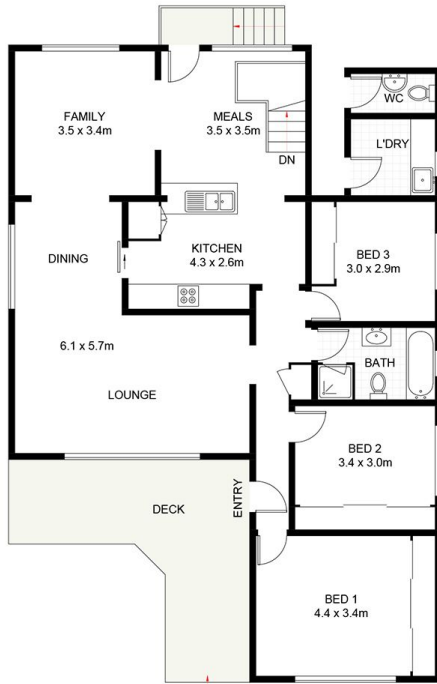


Luke Jeffree
02 9540 2222

[For full version visit the website](https://www.jreproperty.com.au)



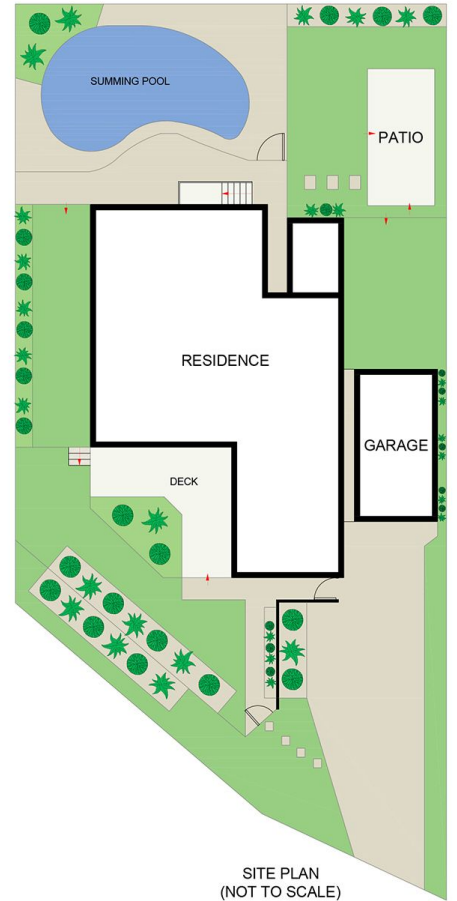
LOWER GROUND FLOOR



GROUND FLOOR



(NOT SHOWN IN ACTUAL LOCATION / ORIENTATION)



214 Gymea Bay Road, Gymea Bay

DISCLAIMER: PLANS SHOWN ARE FOR PRESENTATION PURPOSES AND ARE NOT PART OF ANY LEGAL DOCUMENT. ALL MEASUREMENTS AND FIGURES ARE APPROXIMATE.