



23 Sylvan Street SYLVANIA NSW

5 3 3

In an incredibly convenient setting within moments of the area's attractions and amenities, this exceptional 2 storey family home represents a fantastic lifestyle opportunity for all.

Beautifully presented and immaculately maintained throughout, the property offers a contemporary, neutral palette of clean lines, spacious interiors with quality fittings and fixtures throughout. Perfectly placed for you to just move in and enjoy!

From the entry of the home you are welcomed into the open formal lounge area featuring hardwood flooring and natural gas log fireplace, the perfect introduction to the home's stylish interior and feel.

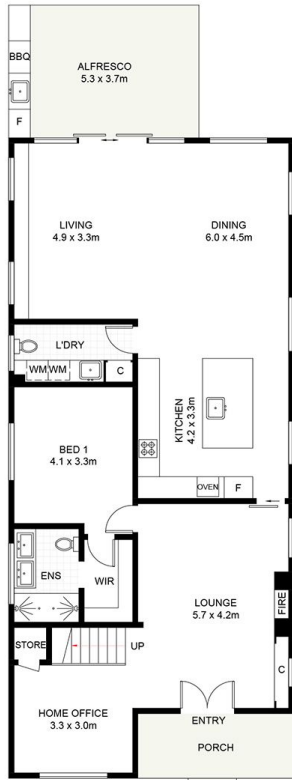
Type : House

View : <https://www.jreproperty.com.au/sale/nsw/sutherland/sylvania/residential/house/7489055>

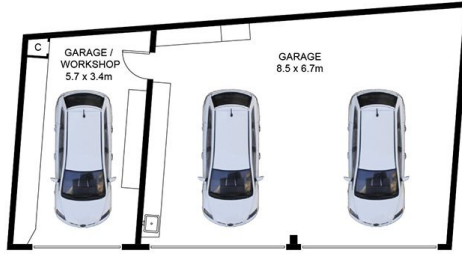


Luke Jeffree
02 9540 2222

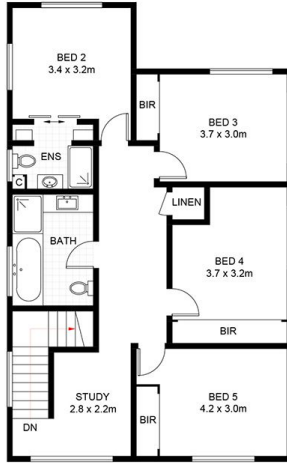
[For full version visit the website](https://www.jreproperty.com.au)



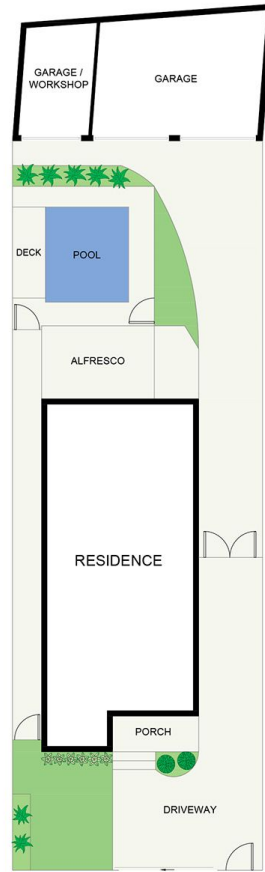
GROUND FLOOR



(NOT SHOWN IN ACTUAL LOCATION / ORIENTATION)



FIRST FLOOR



SITE PLAN
(NOT TO SCALE)



23 Sylvan Street, Sylvania

DISCLAIMER: PLANS SHOWN ARE FOR PRESENTATION PURPOSES AND ARE NOT PART OF ANY LEGAL DOCUMENT. ALL MEASUREMENTS AND FIGURES ARE APPROXIMATE.