



40 Coopers Avenue GYMEA BAY NSW

5 🏠 3 🚗 3 🚗

Occasionally there comes a property that quite simply takes your breath away.

Welcome to 40 Coopers Avenue Gymea Bay where your dream lifestyle is an everyday reality.

A spectacular residence, masterfully designed over two levels, delivers impeccable zoned family accommodation with 5 bedrooms, 2 bathrooms, powder room, multiple living and entertaining areas, a dedicated billiard room and bar, a superb entertainer's kitchen, teenager retreat, study and a connection between the indoors and outdoors which is not only sublime but one of a kind.

The expansive views will captivate you as the property has

[For full version visit the website](#)

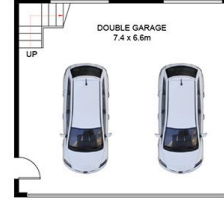
Type : House
Land Size : 1596 sqm
View : <https://www.jreproperty.com.au/sale/nsw/sutherland/gymea-bay/residential/house/7489056>



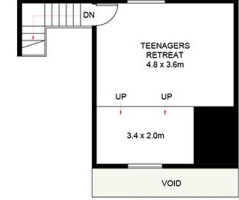
Luke Jeffree
02 9540 2222



SITE PLAN
(NOT TO SCALE)



ENTRY LEVEL
(NOT SHOWN IN ACTUAL
LOCATION / ORIENTATION)



UPPER LEVEL



ENTRY LEVEL



40 Coopers Avenue, Gympie Bay

DISCLAIMER: PLANS SHOWN ARE FOR PRESENTATION PURPOSES AND ARE NOT PART OF ANY LEGAL DOCUMENT. ALL MEASUREMENTS AND FIGURES ARE APPROXIMATE.