



**7/23 June Place GYMEA BAY NSW**

3 2 1

Set privately off the street and beautifully appointed, this light filled townhouse offers contemporary lifestyle living in an enviable locale.

Generously proportioned spaces within a versatile floorplan maximise the natural light whilst the open plan living area features a coastal beach aesthetic comprising custom plantation shutters, timber floors and an expanse of windows that open out to the north facing private courtyard, the perfect location for alfresco entertaining all year round.

The well equipped kitchen features quality appliances, bespoke cabinetry, stone benchtops and stunning herringbone tiled splashback.  
The master bedroom, conveniently located on the ground

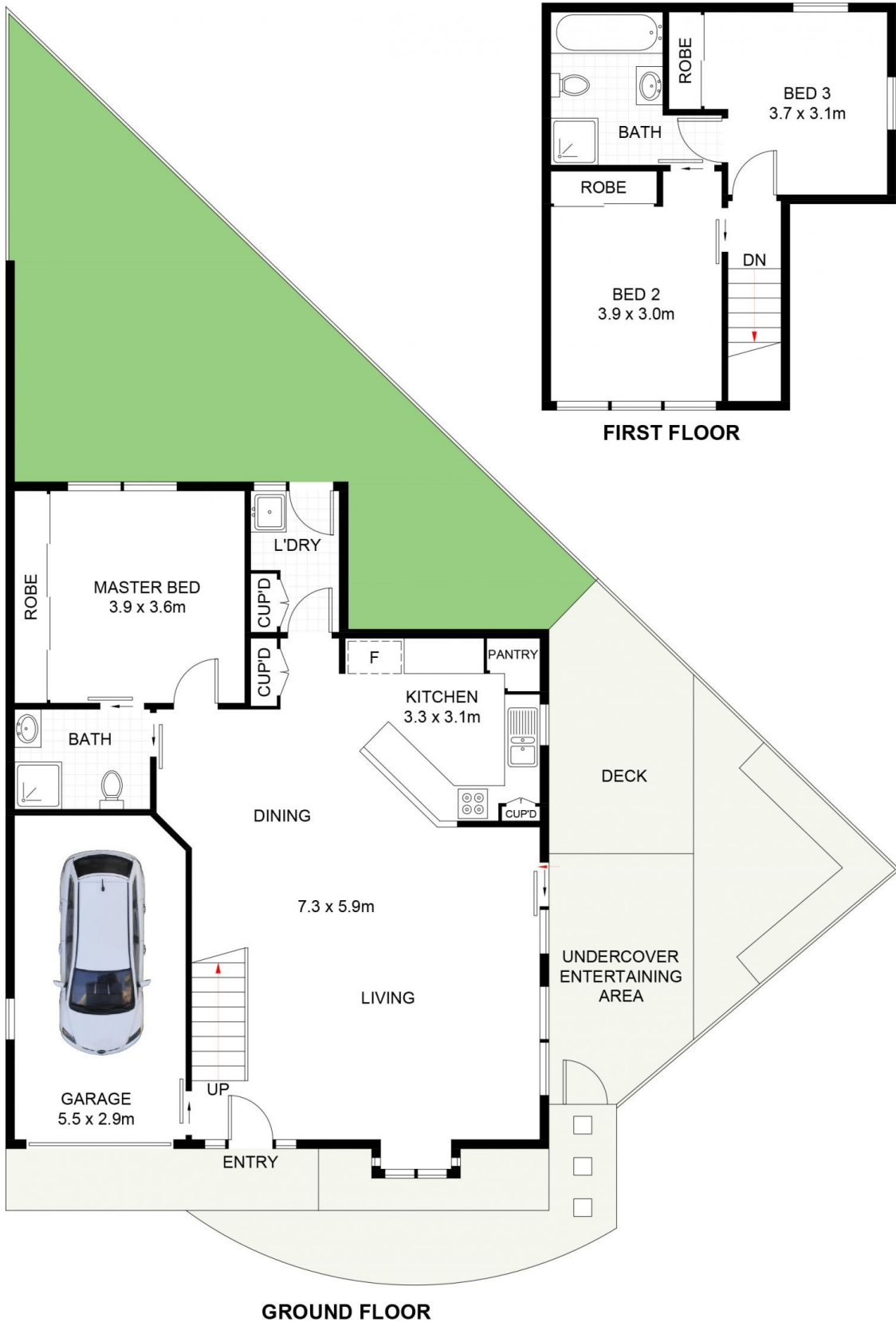
**Type** : Townhouse

**View** : <https://www.jreproperty.com.au/sale/nsw/sutherland/gymea-bay/residential/townhouse/7489057>



**Luke Jeffree**  
**02 9540 2222**

[For full version visit the website](#)



7/23 June Place, Gymea Bay

DISCLAIMER: PLANS SHOWN ARE FOR PRESENTATION PURPOSES AND ARE NOT PART OF ANY LEGAL DOCUMENT. ALL MEASUREMENTS AND FIGURES ARE APPROXIMATE.