

44 Grays Point Road GRAYS POINT NSW

5 3 2

Supremely positioned with spectacular water views and prominently set in a desirable location, this tidal waterfront property instantly captivates with an inviting blend of contemporary style, quality design and a floorplan that not only supports a family lifestyle but also takes in the spectacular views from every vantage point throughout the home.

Boasting exceptional dimensions and impeccable zoning, this multi-level residence offers expansive living and dining spaces that include a large undercover balcony and alfresco on both the living and bedroom levels.

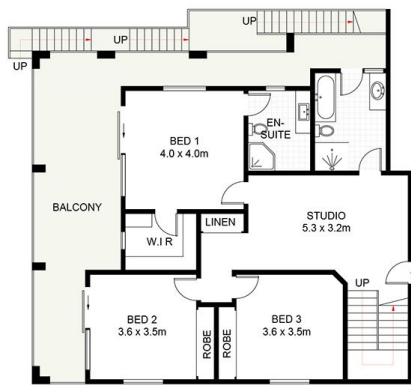
Set back from the street, this modern brick property welcomes you with an inviting entry foyer as well as a private home office with its own patio, giving the ability for a work from home office/studio which is entirely separate

Land Size : 1005 sqm

View : <https://www.jreproperty.com.au/sale/nsw/sutherland/grays-point/residential/house/7489058>



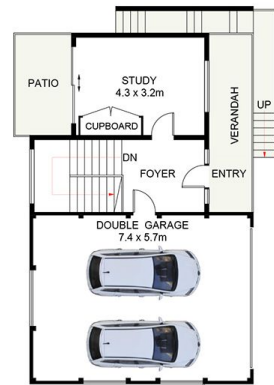
Luke Jeffree
02 9540 2222



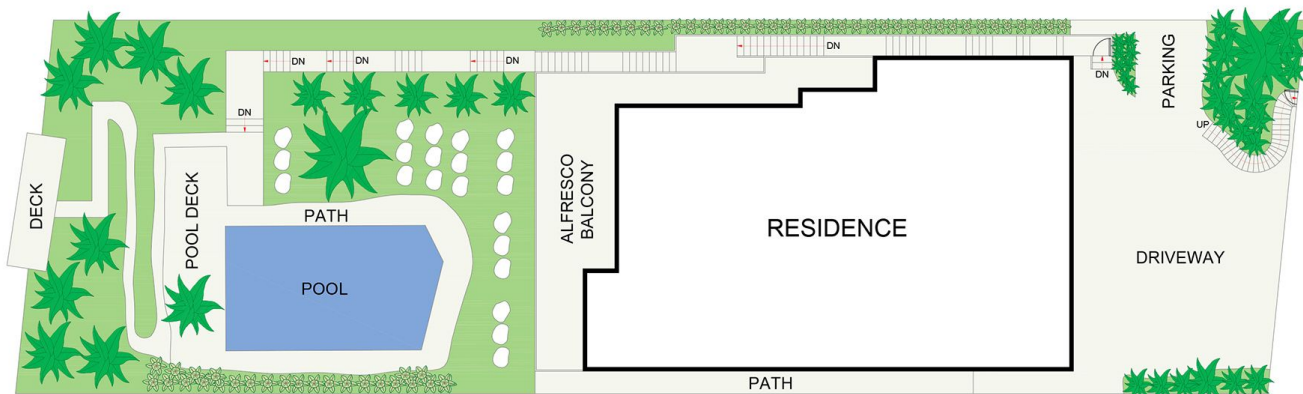
LOWER LEVEL TWO



LOWER LEVEL ONE



ENTRY LEVEL



SITE PLAN
(NOT TO SCALE)



44 Grays Point Road, Grays Point

DISCLAIMER: PLANS SHOWN ARE FOR PRESENTATION PURPOSES AND ARE NOT PART OF ANY LEGAL DOCUMENT. ALL MEASUREMENTS AND FIGURES ARE APPROXIMATE.