

**14/22-28 Premier Street GYMEA NSW**

2 🛏 2 🚿 2 🚗

A lush, leafy setting in a beautifully maintained boutique complex adds tremendous appeal to this secure, immaculately presented tri-level townhouse, perfectly positioned just a few minutes stroll from Gymea station and vibrant village living. Peacefully placed at the rear of the block, its interiors are appointed with quality contemporary fittings and embrace an idyllic flow to a private outdoor entertaining setting.

- \* Open plan living/dining/kitchen with timber floors
- \* Alfresco courtyard framed by private gardens
- \* Stone-topped kitchen, gas cooktop & dishwasher
- \* Sun-bright upstairs bedrooms, master with ensuite
- \* Fully tiled bathrooms, separate laundry and w/c
- \* Internal access to a massively oversized DLUG

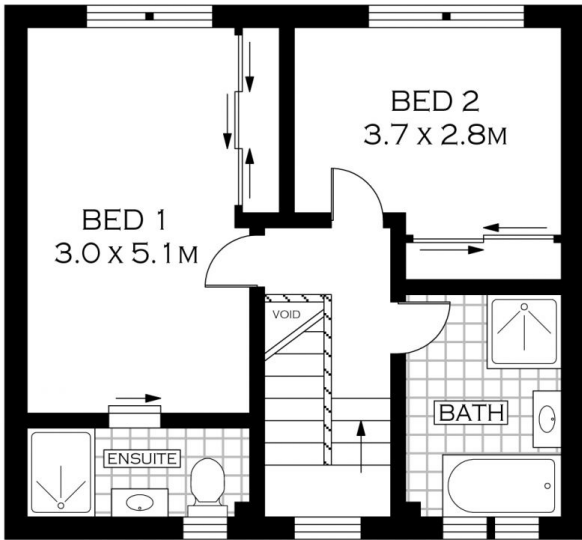
**Type** : Townhouse

**View** : <https://www.jreproperty.com.au/sale/nsw/sutherland/gyMEA/residential/townhouse/7489059>

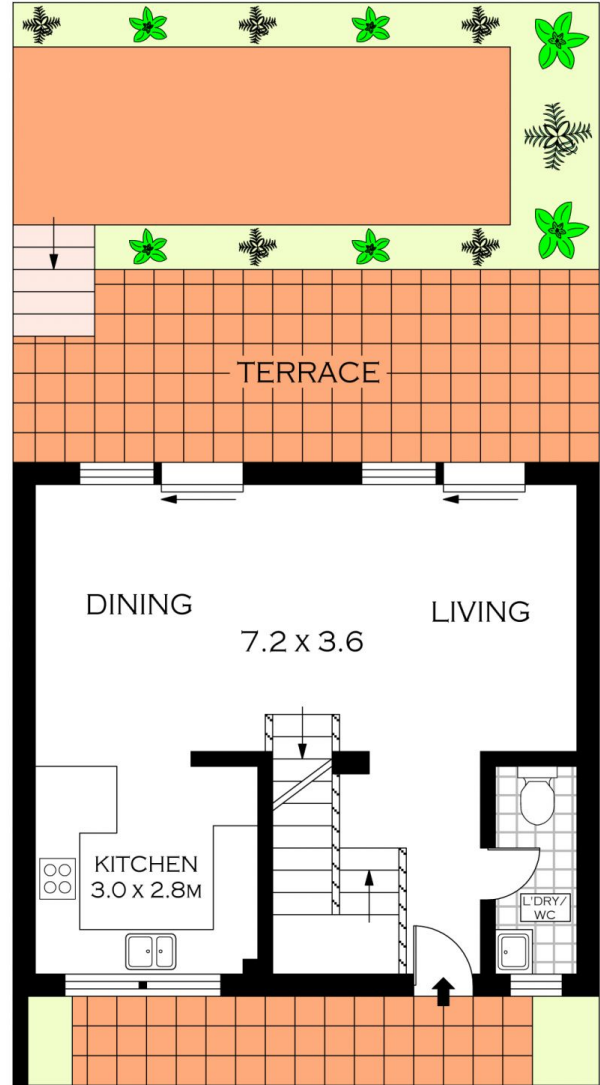


**Luke Jeffree**  
**02 9540 2222**

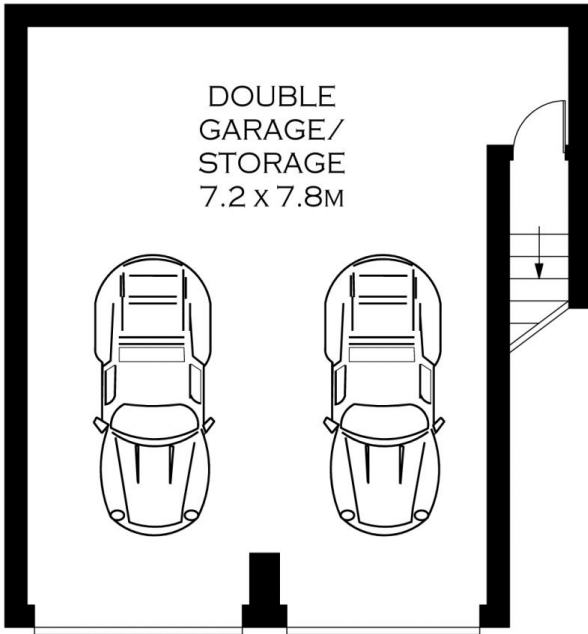
[For full version visit the website](https://www.jreproperty.com.au)



FIRST FLOOR



GROUND FLOOR



LOWER GROUND FLOOR



PLANS SHOWN ONLY INDICATIVE OF LAYOUT. DIMENSIONS ARE APPROXIMATE.  
 Floor plans by [www.realestatemarketingaustralia.com.au](http://www.realestatemarketingaustralia.com.au)  
 Ref. No: 9432

